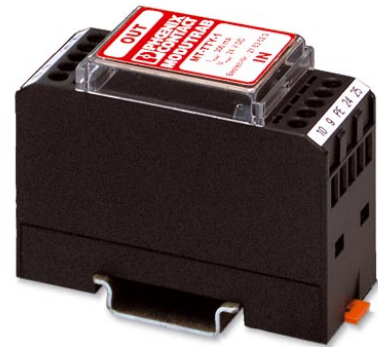



**MT-TTY-1**

Order No.: 2763523

<http://eshop.phoenixcontact.de/phoenix/treeViewClick.do?UID=2763523>Rail-mountable module with surge protection for TTY interface, for  
mounting on NS 35/7.5, housing width: 30 mm**Commercial data**

GTIN (EAN)	 4 017918 065607
sales group	J420
Pack	5 pcs.
Customs tariff	85363010
Catalog page information	Page 109 (TT-2002)

**Product notes**WEEE/RoHS-compliant since:  
06/02/2006

<http://www.download.phoenixcontact.com>  
Please note that the data given here has been taken from the online catalog. For comprehensive information and data, please refer to the user documentation. The General Terms and Conditions of Use apply to Internet downloads.

**Technical data****General**

Color	black
Ambient temperature (operation)	-20 °C ... 60 °C
Mounting type	DIN rail: 35 mm
Design	Rail-mountable module, one-piece
Degree of protection	IP20

Direction of action	Line-Line & Line-Earth Ground
Width	27.40 mm
Height	54.90 mm
Length	77.50 mm

**Protective circuit**

IEC category	C2
	C3
VDE requirement class	C2
	C3
Maximum continuous voltage $U_C$ (wire-ground)	24 V DC
Nominal current $I_N$	300 mA
Operating effective current $I_C$ at $U_C$	$\leq 10 \mu\text{A}$
Nominal discharge surge current $I_n$ (8/20) $\mu\text{s}$ (Core-Earth)	5 kA
Output voltage limitation at 1 kV/ $\mu\text{s}$ (Core-Core) spike	$\leq 35 \text{ V}$
Output voltage limitation at 1 kV/ $\mu\text{s}$ (Core-Earth) spike	$\leq 450 \text{ V}$
Output voltage limitation at 1 kV/ $\mu\text{s}$ (Core-Core) static	$\leq 35 \text{ V}$
Output voltage limitation at 1 kV/ $\mu\text{s}$ (Core-Earth) static	$\leq 450 \text{ V}$
Residual voltage at $I_n$ , (conductor-conductor)	$\leq 35 \text{ V}$
Protection level $U_P$ (Core-Core)	$\leq 35 \text{ V}$
Protection level $U_P$ (Core-Earth)	$\leq 450 \text{ V}$
Response time $t_A$ (Core-Core)	$\leq 1 \text{ ns}$
Response time $t_A$ (Core-Earth)	$\leq 100 \text{ ns}$
Cut-off frequency $f_g$ (3 dB), sym. in 50 Ohm system	4 MHz
Cut-off frequency $f_g$ (3 dB), sym. in 600 Ohm system	300 kHz
Resistance in series	4.7 $\Omega$ (Path 10)
	4.7 $\Omega$ (Path 25)

**Connection data**

Connection method	Screw connection
Connection type IN	Screw terminal blocks
Connection type OUT	Screw terminal blocks

Screw thread	M3
Stripping length	8 mm
Conductor cross section stranded min.	0.2 mm <sup>2</sup>
Conductor cross section stranded max.	2.5 mm <sup>2</sup>
Conductor cross section solid min.	0.2 mm <sup>2</sup>
Conductor cross section solid max.	4 mm <sup>2</sup>
Conductor cross section AWG/kcmil min.	24
Conductor cross section AWG/kcmil max	12

**Connection, protective circuit**

Standards/regulations	Draft IEC 64644-1
	E VDE 0845-3-1

**Certificates / Approvals**

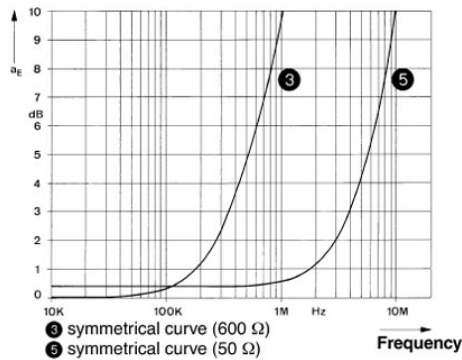


Certification

GOST

**Diagrams/Drawings**

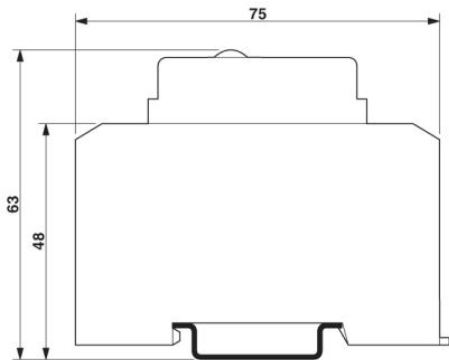
Diagram



Characteristic attenuation curve

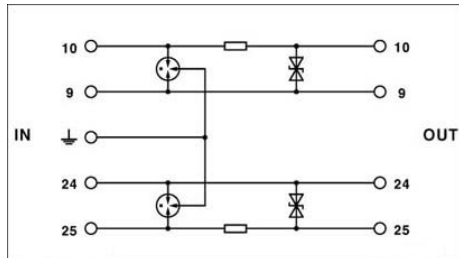
Dimensioned drawing

---



Circuit diagram

---



**Address**

PHOENIX CONTACT Inc., USA  
586 Fulling Mill Road  
Middletown, PA 17057, USA  
Phone (800) 888-7388  
Fax (717) 944-1625  
<http://www.phoenixcon.com>



© 2011 Phoenix Contact  
Technical modifications reserved;