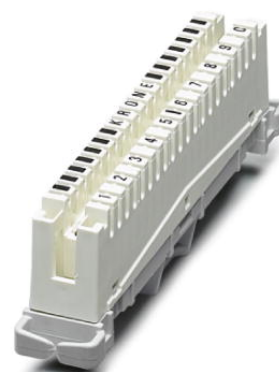



## CT 10-TL

Order No.: 2765356



<http://eshop.phoenixcontact.de/phoenix/treeViewClick.do?UID=2765356>

LSA-PLUS disconnect strip to hold the CTM and CT 10 protection modules. Version: 10 double conductors, dimension A: 124 mm.

| Commercial data          |                                                                                                       |
|--------------------------|-------------------------------------------------------------------------------------------------------|
| GTIN (EAN)               | <br>4 017918 066253 |
| sales group              | J468                                                                                                  |
| Pack                     | 5 pcs.                                                                                                |
| Customs tariff           | 85389099                                                                                              |
| Catalog page information | Page 124 (TT-2011)                                                                                    |

### Product notes

WEEE/RoHS-compliant since:  
05/02/2006



<http://www.download.phoenixcontact.com>  
Please note that the data given here has been taken from the online catalog. For comprehensive information and data, please refer to the user documentation. The General Terms and Conditions of Use apply to Internet downloads.

| Technical data                     |                           |
|------------------------------------|---------------------------|
| <b>General</b>                     |                           |
| Inflammability class acc. to UL 94 | V0                        |
| Color                              | gray                      |
| Mounting type                      | auf LSA-PLUS-Montagebügel |
| Design                             | LSA-PLUS module           |

---

|        |           |
|--------|-----------|
| Width  | 124.00 mm |
| Height | 53.00 mm  |
| Length | 22.00 mm  |

**Connection data**

|                     |                    |
|---------------------|--------------------|
| Connection type IN  | IDC terminal block |
| Connection type OUT | IDC terminal block |

**Certificates / Approvals**



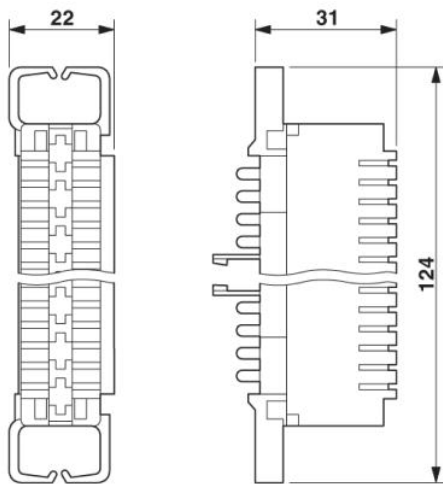
Certification

GOST

---

**Diagrams/Drawings**

Dimensioned drawing



**Address**

PHOENIX CONTACT Inc., USA  
586 Fulling Mill Road  
Middletown, PA 17057, USA  
Phone (800) 888-7388  
Fax (717) 944-1625  
<http://www.phoenixcon.com>



© 2011 Phoenix Contact  
Technical modifications reserved;