


**C-UFB- 5DC/E**

Order No.: 2782300

<http://eshop.phoenixcontact.de/phoenix/treeViewClick.do?UID=2782300>

Attachment plug with surge voltage coarse and fine protection, for coaxial signal interfaces with floating shield, signal voltage 5 V.  
Connection: BNC female/male connector

**Commercial data**

GTIN (EAN)	 4 017918 069445
sales group	J401
Pack	10 pcs.
Customs tariff	85363010
Catalog page information	Page 174 (TT-2011)

**Product notes**

WEEE/RoHS-compliant since:  
05/08/2006



<http://www.download.phoenixcontact.com>  
Please note that the data given here has been taken from the online catalog. For comprehensive information and data, please refer to the user documentation. The General Terms and Conditions of Use apply to Internet downloads.

**Technical data****General**

Housing material	Aluminum
Color	black

Standards for air and creepage distances	VDE 0110-1
	IEC 60664-1: 1992-10
Total surge current (8/20) $\mu$ s	20 kA
Ambient temperature (operation)	-40 °C ... 80 °C
Mounting type	Connection-specific intermediate plugging
Design	Attachment plug
Degree of protection	IP20
Direction of action	Line-Shield/Earth Ground
Width	25.40 mm
Height	93.00 mm
Length	25.40 mm

**Protective circuit**

IEC category	C2
	C3
	D1
Maximum continuous operating voltage $U_c$	5 V DC
Maximum continuous voltage $U_c$ (wire-shield)	5 V DC
Nominal current $I_N$	185 mA (25°C)
Operating effective current $I_c$ at $U_c$	$\leq 300 \mu$ A
Ground conductor current $I_{PE}$	$\leq 2 \mu$ A
Nominal discharge surge current $I_n$ (8/20) $\mu$ s (Core-Earth)	10 kA
Nominal discharge surge current $I_n$ (8/20) $\mu$ s (Core-Shield)	10 kA
Total surge current (8/20) $\mu$ s	20 kA
Output voltage limitation at 1 kV/ $\mu$ s (Core-Earth) spike	$\leq 500$ V
Output voltage limitation at 1 kV/ $\mu$ s (Core-Shield) spike	$\leq 150$ V
Output voltage limitation at 1 kV/ $\mu$ s (Core-Earth) static	$\leq 500$ V
Output voltage limitation at 1 kV/ $\mu$ s (Core-Shield) static	$\leq 13$ V
Residual voltage at $I_n$ , (conductor-shield)	$\leq 10$ V
Protection level $U_p$ (Core-Earth)	$\leq 500$ V (C1 - 1 kV/500 A)
Protection level $U_p$ (Core-Shield)	$\leq 150$ V (C1 - 1 kV/500 A)
Response time $t_A$ (Core-Earth)	$\leq 100$ ns

Response time tA (Core-GND)	≤ 500 ns
Input attenuation aE, asym.	Typ. 2 dB (≤ 20 MHz)
Cut-off frequency fg (3 dB), asym. (shield) in 50 Ohm system	Typ. 90 MHz
Surge carrying capacity in acc. with IEC 61643-21 (Core-Earth)	C2 (10 kV/5 kA)
	D1 (2.5 kA)

**Connection data**

Connection method	BNC 50 Ω
Connection type IN	BNC socket
Connection type OUT	BNC plug

**Connection, equipotential bonding**

Connection method	PVC litz wire
-------------------	---------------

**Connection, protective circuit**

Standards/regulations	IEC 61643-21
-----------------------	--------------

**Certificates / Approvals**



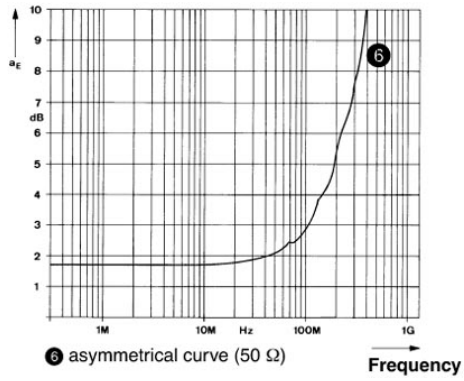
Certification GOST

**Accessories**

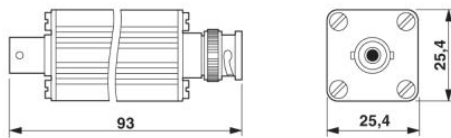
Item	Designation	Description
<b>Plug/Adapter</b>		
2805038	BNC-DV 50	BNC connector, double-level, for mounting on NS 32 or NS 35/7.5, wave impedance: 50 Ohm
2805041	BNC-V 50	BNC connector, single-level, for mounting on NS 32 or NS 35/7.5, wave impedance: 50 Ohm

## Diagrams/Drawings

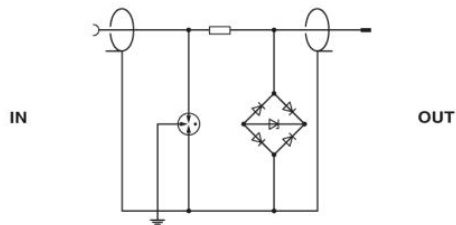
### Diagram



### Dimensioned drawing



### Circuit diagram



**Address**

PHOENIX CONTACT Inc., USA  
586 Fulling Mill Road  
Middletown, PA 17057, USA  
Phone (800) 888-7388  
Fax (717) 944-1625  
<http://www.phoenixcon.com>



© 2011 Phoenix Contact  
Technical modifications reserved;