

# NEF 1- 1


Order No.: 2794123



<http://eshop.phoenixcontact.de/phoenix/treeViewClick.do?UID=2794123>

Mains interference filter, with universal foot for mounting on NS 32 and NS 35/7.5, nominal current: 1 A

## Commercial data

GTIN (EAN)	 4 017918 072810
sales group	J050
Pack	10 pcs.
Customs tariff	85363010
Catalog page information	Page 233 (TT-2011)

## Product notes

WEEE/RoHS-compliant since:  
06/02/2006



<http://www.download.phoenixcontact.com>  
Please note that the data given here has been taken from the online catalog. For comprehensive information and data, please refer to the user documentation. The General Terms and Conditions of Use apply to Internet downloads.

## Technical data

### Standards

Housing material	PA
Inflammability class acc. to UL 94	V2
Color	black
Standards for air and creepage distances	IEC 60664-1: 1992-10 VDE 0110-1

Degree of protection	IP20
Design	Rail-mountable module, one-piece
Mounting type	DIN rail/G-profile rail
Ambient temperature (operation)	-25 °C ... 100 °C (HMF)
Direction of action	1L-N & N-PE
Width	24.25 mm
Height	85.50 mm
Length	79.40 mm

**Protective circuit**

Nominal voltage $U_N$	240 V AC
Max. operating voltage $U_{max}$	264 V AC
Arrester rated voltage $U_C$ (L-N)	264 V AC
Arrester rated voltage $U_C$ (L-PE)	264 V AC
Nominal frequency $f_N$	50 Hz
	60 Hz
Nominal current $I_N$	1 A (40°C)
Operating effective current $I_C$ at $U_C$	$\leq 0.25$ mA
Ground conductor current $I_{PE}$	$\leq 0.5$ mA
Inductivity in series	2x 10 mH (in acc. with VDE 0565-2 with current compensation)
Capacity (L-N)	2x 100 nF (X2)
Capacity (L-PE)	2x 2.2 nF (Y2)
Max. required back-up fuse	1 A (gL)
Input attenuation aE, sym.	$\geq 65$ dB (50 $\Omega$ / 1 MHz)
Input attenuation aE, asym.	$\geq 45$ dB (50 $\Omega$ / 1 MHz)

**Non-heating apparatus connection, power supply**

Connection method	Screw connection
Connection type IN	Screw terminal blocks
Connection type OUT	Screw terminal blocks
Screw thread	M3
Tightening torque	0.8 Nm
Stripping length	8 mm
Conductor cross section stranded min.	0.2 mm <sup>2</sup>
Conductor cross section stranded max.	2.5 mm <sup>2</sup>
Conductor cross section solid min.	0.2 mm <sup>2</sup>

Conductor cross section solid max.	4 mm <sup>2</sup>
Conductor cross section AWG/kcmil min.	24
Conductor cross section AWG/kcmil max	12

**Connection, protective circuit**

Standards/regulations	IEC 60939-2
	DIN EN 60939-2

**Protective circuit, filter**

Discharge resistor	1 MΩ
--------------------	------

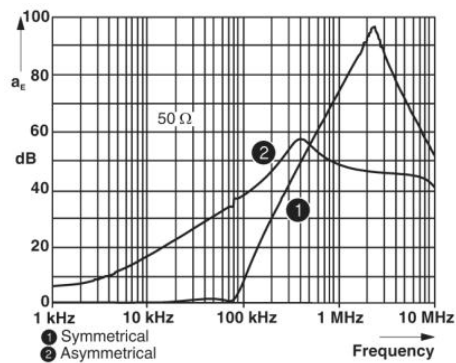
**Certificates / Approvals**

Certification

GOST, UL, VDE-PZI

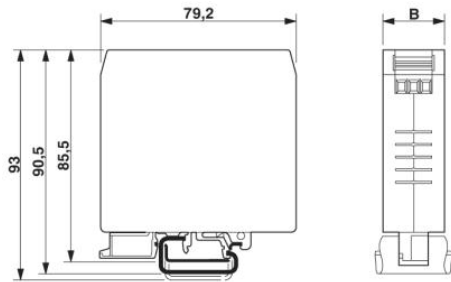
**Diagrams/Drawings**

Diagram



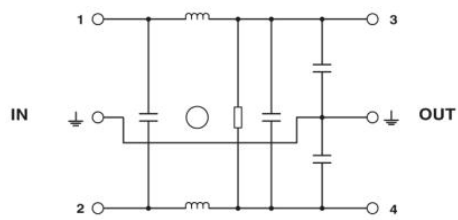
Dimensioned drawing

---



Circuit diagram

---



**Address**

PHOENIX CONTACT Inc., USA  
586 Fulling Mill Road  
Middletown, PA 17057, USA  
Phone (800) 888-7388  
Fax (717) 944-1625  
<http://www.phoenixcon.com>



© 2011 Phoenix Contact  
Technical modifications reserved;