

S-PT-2XEX-24DC

Order No.: 2800040




<http://eshop.phoenixcontact.de/phoenix/treeViewClick.do?UID=2800040>

Surge protection for two floating signal circuits in screw-on module with IP67 degree of protection for sensor heads, connection M20 x 1.5. Tested in acc. with the protection types in Ex areas Ex d / Ex tD / Ex ia IIC / Ex iaD.



Commercial data

| | |
|--------------------------|--|
| GTIN (EAN) |  4 046356 411028 |
| sales group | J331 |
| Pack | 1 pcs. |
| Customs tariff | 85363010 |
| Catalog page information | Page 115 (TT-2011) |

Product notes

WEEE/RoHS-compliant since: 05/13/2008



<http://www.download.phoenixcontact.com>
Please note that the data given here has been taken from the online catalog. For comprehensive information and data, please refer to the user documentation. The General Terms and Conditions of Use apply to Internet downloads.

Technical data

General

| | |
|------------------|------------------|
| Housing material | High-grade steel |
| Color | silver |

| | |
|--|-------------------------------|
| Standards for air and creepage distances | IEC 60664-1 |
| | IEC 60079-11 |
| Total surge current (8/20) μ s | 20 kA |
| Total surge current (10/350) μ s | 2 kA |
| Ambient temperature (operation) | -25 °C ... 80 °C (non-EX) |
| Mounting type | M20 |
| Design | Screw-in module |
| Number of positions | 4 |
| Degree of protection | IP67 |
| Direction of action | Line-Line & Line-Earth Ground |
| Width | 28.00 mm |
| Height | 79.00 mm |
| Length | 28.00 mm |

Protective circuit

| | |
|---|----------------|
| IEC category | C1 |
| | C2 |
| | C3 |
| | D1 |
| Nominal voltage U_N | 24 V DC |
| Maximum continuous operating voltage U_C | 36 V DC |
| | 25 V AC |
| Maximum continuous voltage U_C (wire-wire) | 36 V DC |
| | 25 V AC |
| Ground conductor current I_{PE} | $\leq 2 \mu$ A |
| Nominal discharge surge current I_n (8/20) μ s (Core-Core) | 260 A |
| Nominal discharge surge current I_n (8/20) μ s (Core-Earth) | 10 kA |
| Total surge current (8/20) μ s | 20 kA |
| Nominal pulse current I_{an} (10/1000) μ s (Core-Core) | 50 A |
| Lightning test current (10/350) μ s, peak value I_{imp} | 1 kA |
| Output voltage limitation at 1 kV/ μ s (Core-Core) spike | ≤ 65 V |
| Output voltage limitation at 1 kV/ μ s (Core-Earth) spike | ≤ 1.1 kV |

| | |
|--|---------------------------------------|
| Output voltage limitation at 1 kV/ μ s (Core-Core) static | ≤ 50 V |
| Protection level U_p (Core-Core) | ≤ 50 V (C3 (10 A)) |
| Protection level U_p (Core-Earth) | ≤ 1.1 kV (C3 (100A)) |
| | ≤ 1.1 kV (C1 - 500 A) |
| | ≤ 1.2 kV (C2 (10 kV/5 kA)) |
| Response time t_A (Core-Core) | ≤ 1 ns |
| Response time t_A (Core-Earth) | ≤ 100 ns |
| Input attenuation aE, sym. | Typ. 0.1 dB (1 MHz / 50 Ω) |
| | Typ. 0.1 dB (400 kHz / 150 Ω) |
| Cut-off frequency f_g (3 dB), sym. in 50 Ohm system | Typ. 5 MHz |
| Cut-off frequency f_g (3 dB), sym. in 150 Ohm system | Typ. 2 MHz |
| Capacity (Core-Core) | Typ. 1.5 nF |
| Capacity (Core-Earth) | Typ. 5 pF |
| Resistance in series | 0 Ω |
| Surge carrying capacity in acc. with IEC 61643-21 (Core-Core) | C3 (25 A) |
| Surge carrying capacity in acc. with IEC 61643-21 (Core-Earth) | C1 (1 kV / 500 A) |
| | C2 (10 kV/5 kA) |
| | C3 (100 A) |
| | D1 (1 kA) |
| Alternating current carrying capacity in acc. with IEC 61643-21 (Core-Earth) | 10 A - 1 s |

Connection data

| | |
|-------------------|------------------|
| Connection method | Individual wires |
|-------------------|------------------|

Connection, protective circuit

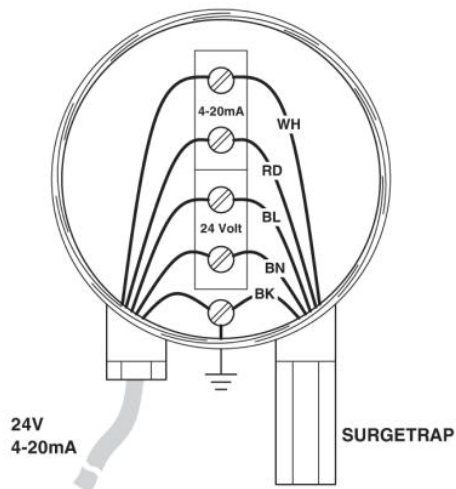
| | |
|-----------------------|-------------|
| Standards/regulations | EN 61643-21 |
| | EN 60079-0 |
| | EN 60079-1 |
| | EN 60079-11 |
| | EN 60079-26 |
| | EN 61241-0 |
| | EN 61241-1 |
| | EN 61241-11 |

Certificates / Approvals

Certification Ex: IECEX, KEMA-EX

Diagrams/Drawings

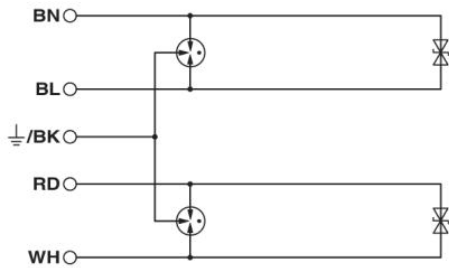
Application drawing



Dimensioned drawing



Circuit diagram



Address

PHOENIX CONTACT Inc., USA
586 Fulling Mill Road
Middletown, PA 17057, USA
Phone (800) 888-7388
Fax (717) 944-1625
<http://www.phoenixcon.com>



© 2011 Phoenix Contact
Technical modifications reserved;