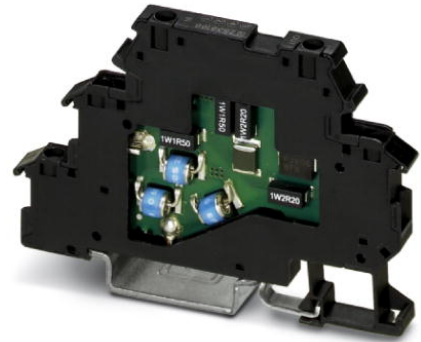



# TT-2-PE-110AC

Order No.: 2858483

<http://eshop.phoenixcontact.de/phoenix/treeViewClick.do?UID=2858483>

Modular terminal block with two-stage surge protection for a floating double conductor, separate PE connection, nominal voltage: 110 V AC, for mounting on NS 35/7.5, terminal block width 6.2 mm, terminal block height: 54.6 mm

## Commercial data

GTIN (EAN)	 4 017918 893156
sales group	J304
Pack	10 pcs.
Customs tariff	85363010
Catalog page information	Page 106 (TT-2011)

## Product notes

WEEE/RoHS-compliant since:  
05/17/2006



<http://www.download.phoenixcontact.com>  
Please note that the data given here has been taken from the online catalog. For comprehensive information and data, please refer to the user documentation. The General Terms and Conditions of Use apply to Internet downloads.

## Technical data

### General

Housing material	PA 6.6
Inflammability class acc. to UL 94	V0
Color	black

Standards for air and creepage distances	IEC 60664-1
Ambient temperature (operation)	-40 °C ... 85 °C
Mounting type	DIN rail: 35 mm
Design	Double-level terminal block with PE foot – separate PE connection
Number of positions	2
Degree of protection	IP20
Direction of action	Line-Line & Line-Earth Ground
Width	6.20 mm
Height	54.60 mm
Length	79.60 mm

**Protective circuit**

IEC category	C1
	C2
	C3
	D1
Nominal voltage $U_N$	110 V AC
Maximum continuous operating voltage $U_C$	120 V AC
Maximum continuous voltage $U_C$ (wire-wire)	120 V AC
Nominal current $I_N$	300 mA (30 °C)
Operating effective current $I_C$ at $U_C$	$\leq 5 \mu\text{A}$
Ground conductor current $I_{PE}$	$\leq 10 \mu\text{A}$
Nominal discharge surge current $I_n$ (8/20) $\mu\text{s}$ (Core-Core)	5 kA
Nominal discharge surge current $I_n$ (8/20) $\mu\text{s}$ (Core-Earth)	5 kA
Max. discharge surge current $I_{max}$ (8/20) $\mu\text{s}$ maximum (Core-Core)	5 kA
Max. discharge surge current $I_{max}$ (8/20) $\mu\text{s}$ maximum (Core-Earth)	5 kA
Nominal pulse current $I_{an}$ (10/1000) $\mu\text{s}$ (Core-Earth)	100 A
Lightning test current (10/350) $\mu\text{s}$ , peak value $I_{imp}$	500 A
Output voltage limitation at 1 kV/ $\mu\text{s}$ (Core-Core) spike	$\leq 250 \text{ V}$
Output voltage limitation at 1 kV/ $\mu\text{s}$ (Core-Earth) spike	$\leq 650 \text{ V}$

Protection level $U_p$ (Core-Core)	$\leq 300$ V (C2 - 10 kV / 5 kA)
	$\leq 250$ V (C1 - 1 kV/500 A)
Protection level $U_p$ (Core-Earth)	$\leq 900$ V (C2 - 10 kV / 5 kA)
	$\leq 650$ V (C1 - 1 kV/500 A)
	$\leq 850$ V (C3 - 10 A)
	$\leq 900$ V (C3 - 100 A)
	$\leq 800$ V (D1 - 500 A)
Response time $t_A$ (Core-Core)	$\leq 1$ ns
Response time $t_A$ (Core-Earth)	$\leq 100$ ns
Input attenuation $a_E$ , sym.	Typ. 1.5 dB ( $\leq 2$ MHz)
	Typ. 0.6 dB ( $\leq 500$ kHz / 150 $\Omega$ )
Cut-off frequency $f_g$ (3 dB), sym. in 50 Ohm system	Typ. 15 MHz
Cut-off frequency $f_g$ (3 dB), sym. in 150 Ohm system	Typ. 8 MHz
Capacity (Core-Core)	Typ. 600 pF
Capacity (Core-Earth)	$\leq 2$ pF
Resistance in series	9.4 $\Omega$ 10 % (per path)
	9.4 $\Omega$
Max. required back-up fuse	315 mA (T/IEC 60127-2/3)
Surge carrying capacity in acc. with IEC 61643-21 (Core-Core)	C1 (1 kV / 500 A)
	C2 (10 kV/5 kA)
Surge carrying capacity in acc. with IEC 61643-21 (Core-Earth)	C1 (1 kV / 500 A)
	C2 (10 kV/5 kA)
	C3 (100 A)
	D1 (500 A)
Alternating current carrying capacity in acc. with IEC 61643-21 (Core-Core)	0.1 A/1 s
Alternating current carrying capacity in acc. with IEC 61643-21 (Core-Earth)	1 A/1s

**Connection data**

Connection method	Screw connection
Connection type IN	Screw terminal blocks
Connection type OUT	Screw terminal blocks
Screw thread	M3

Tightening torque	0.8 Nm
Stripping length	8 mm
Conductor cross section stranded min.	0.2 mm <sup>2</sup>
Conductor cross section stranded max.	2.5 mm <sup>2</sup>
Conductor cross section solid min.	0.2 mm <sup>2</sup>
Conductor cross section solid max.	4 mm <sup>2</sup>
Conductor cross section AWG/kcmil min.	24
Conductor cross section AWG/kcmil max	14

**Connection, protective circuit**

Standards/regulations	IEC 61643-21
	EN 61643-21

**Certificates / Approvals**



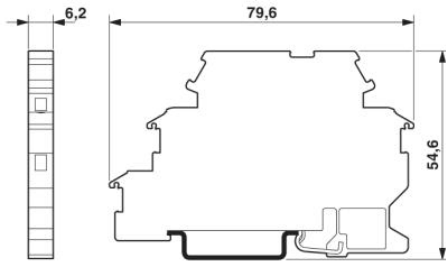
Certification GOST

**Additional products**

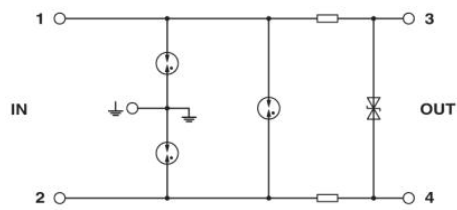
Item	Designation	Description
<b>Assembly</b>		
2838995	D-DEK 1,5 BK	Cover for setting the end of a TERMITRAB TT-2-PE... and TT-2/2 row of terminal blocks, color: black
2839295	SSA 3-6	shield fast connections for conductor diameter 3 - 6 mm. Potential connection cable: 200 mm, black
2839512	SSA 5-10	Shield fast connection for conductor diameters 5 - 10 mm. Potential connection cable: 200 mm, black

## Diagrams/Drawings

### Dimensioned drawing



### Circuit diagram



**Address**

PHOENIX CONTACT Inc., USA  
586 Fulling Mill Road  
Middletown, PA 17057, USA  
Phone (800) 888-7388  
Fax (717) 944-1625  
<http://www.phoenixcon.com>



© 2011 Phoenix Contact  
Technical modifications reserved;