


DT-UFB-485/BS

Order No.: 2920612




<http://eshop.phoenixcontact.de/phoenix/treeViewClick.do?UID=2920612>

D-SUB-9 attachment plug with surge protection for RS-485 interfaces. Can alternatively be snapped onto DIN rails.

| Commercial data | |
|--------------------------|--|
| GTIN (EAN) |  |
| sales group | J400 |
| Pack | 1 pcs. |
| Customs tariff | 85363010 |
| Catalog page information | Page 147 (TT-2011) |

Product notes

WEEE/RoHS-compliant since: 12/01/2006



<http://www.download.phoenixcontact.com>
 Please note that the data given here has been taken from the online catalog. For comprehensive information and data, please refer to the user documentation. The General Terms and Conditions of Use apply to Internet downloads.

| Technical data | |
|--|----------------------|
| General | |
| Housing material | Zinc die-cast |
| Color | silver/black |
| Standards for air and creepage distances | IEC 60664-1: 1992-10 |
| | VDE 0110-1 |
| Total surge current (8/20) μ s | 10 kA |

| | |
|---|---|
| Ambient temperature (operation) | -40 °C ... 85 °C |
| Mounting type | Connection-specific attachment plug and DIN rail, 35 mm |
| Design | Attachment plug for DIN rail mounting |
| Number of positions | 5 |
| Degree of protection | IP20 |
| Direction of action | Line-Line & Line-Ground/Shield |
| Width | 25.00 mm |
| Height | 63.00 mm |
| Length | 110.00 mm |
| Protective circuit | |
| IEC category | B2 |
| | C1 |
| | C2 |
| | C3 |
| | D1 |
| VDE requirement class | B2 |
| | C1 |
| | C2 |
| | C3 |
| | D1 |
| Maximum continuous operating voltage U_c | 12 V DC |
| Maximum continuous voltage U_C (wire-wire) | 12 V DC |
| Maximum continuous voltage U_c (wire-ground) | 90 V DC |
| Nominal current I_N | ≤ 380 mA (25°C) |
| Operating effective current I_c at U_c | ≤ 1 μ A |
| Ground conductor current I_{PE} | ≤ 5 μ A |
| Nominal discharge surge current I_n (8/20) μ s (Core-Core) | ≤ 5 kA |
| Nominal discharge surge current I_n (8/20) μ s (Core-Earth) | ≤ 5 kA |
| Total surge current (8/20) μ s | 10 kA |
| Output voltage limitation at 1 kV/ μ s (Core-Earth) spike | ≤ 700 V |
| Output voltage limitation at 1 kV/ μ s (Core-Core) static | ≤ 25 V |
| Output voltage limitation at 1 kV/ μ s (Core-Earth) static | ≤ 700 V |

| | |
|--|---|
| Output voltage limitation at 1 kV/ μ s (Core-GND) static | ≤ 25 V |
| Residual voltage at I_n , (conductor-conductor) | ≤ 25 V |
| Residual voltage at I_n , (conductor-ground) | ≤ 55 V |
| Residual voltage at I_n , (conductor-GND) | ≤ 25 V |
| Protection level U_p (Core-Core) | ≤ 30 V (B2 - 100 A) |
| | ≤ 30 V (C1 - 500 A) |
| | ≤ 40 V (C2 - 5 kA) |
| Protection level U_p (Core-Earth) | ≤ 700 V (B2 - 100 A) |
| | ≤ 700 V (C1 - 500 A) |
| | ≤ 750 V (C2 - 5 kA) |
| Response time t_A (Core-Core) | ≤ 100 ns |
| Response time t_A (Core-Earth) | ≤ 100 ns |
| Input attenuation aE, sym. | Typ. 0.3 dB (≤ 30 MHz) |
| | Typ. 0.3 dB (≤ 7 MHz / 150 Ω) |
| | Typ. 0.3 dB (≤ 2 MHz / 600 Ω) |
| Cut-off frequency f_g (3 dB), sym. in 100 Ohm system | Typ. 50 MHz |
| Resistance in series | 3.3 Ω 10 % |
| Surge carrying capacity in acc. with IEC 61643-21 (Core-Core) | C1 (1 kV / 500 A) |
| | C2 (10 kV/5 kA) |
| | B2 (4 kV / 100 A) |
| Surge carrying capacity in acc. with IEC 61643-21 (Core-Earth) | B2 (4 kV / 100 A) |
| | C1 (1 kV / 500 A) |
| | C2 (10 kV/5 kA) |
| | D1 (1 kA) |

Connection data

| | |
|---------------------|-------------------|
| Connection method | D-SUB-9 |
| Connection type IN | D-SUB-9 socket |
| Connection type OUT | D-SUB-9 connector |

Connection, equipotential bonding

| | |
|-------------------|------------------|
| Connection method | Cable connection |
|-------------------|------------------|

Connection, protective circuit

| | |
|-----------------------|-----------------|
| Standards/regulations | IEC 61643-21 |
| | DIN EN 61643-21 |

Certificates / Approvals



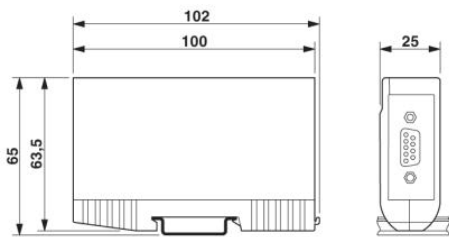
Certification GOST

Accessories

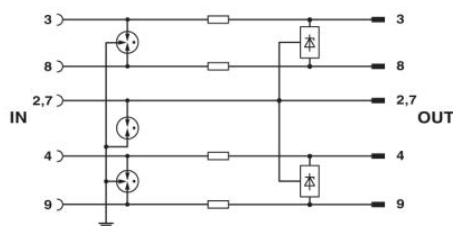
| Item | Designation | Description |
|----------------|----------------------|---|
| General | | |
| 1656233 | VS-09-DSUB-20-LI-1,0 | Assembled D-SUB cable shielded, 9-pos., stranded (7-wire), cable color RAL 7000 (gray), IP20 degree of protection, head 1 with socket shell 1 and straight cable outlet, head 2 with pin shell 1 and straight cable outlet, length: 1 m |

Diagrams/Drawings

Dimensioned drawing



Circuit diagram



Address

PHOENIX CONTACT Inc., USA
586 Fulling Mill Road
Middletown, PA 17057, USA
Phone (800) 888-7388
Fax (717) 944-1625
<http://www.phoenixcon.com>



© 2011 Phoenix Contact
Technical modifications reserved;