

EMG 30-SPK-10K LIN

Order No.: 2942137

The illustration shows version EMG 30-SPK- 1K LIN




<http://eshop.phoenixcontact.de/phoenix/treeViewClick.do?UID=2942137>

Cascading setpoint value potentiometer, for selecting presettable setpoints via a 24 V control signal, resistance value 10 k Ω



Commercial data

GTIN (EAN)	 4 017918 080624
sales group	H561
Pack	10 pcs.
Customs tariff	85334010
Catalog page information	Page 323 (IF-2002)

Product notes

WEEE/RoHS-compliant since:
01/02/2006



<http://www.download.phoenixcontact.com>
Please note that the data given here has been taken from the online catalog. For comprehensive information and data, please refer to the user documentation. The General Terms and Conditions of Use apply to Internet downloads.

Technical data

Input data

Potentiometer	10 k Ω
Resistance tolerance	$\pm 20\%$
Potentiometer, current-carrying capacity	0.5 W
Nominal input voltage U_N	24 V $\pm 25\%$

Input current	20 mA
Typical response time	< 10 ms
Typical release time	< 10 ms
Protective circuit/component	Damping diode, polarity protection diode
Operating voltage display	Yes

Output data

Contact material	Fixed contacts: Silver palladium (AgPdAu), 3 µm hard gold-plated Mobile contacts: Silver palladium (AgPd)
Maximum switching voltage	10 V (depending on application)
Mechanical service life	> 2 x 10 ⁷ cycles

Connection data

Conductor cross section solid min.	0.2 mm ²
Conductor cross section solid max.	4 mm ²
Conductor cross section stranded min.	0.2 mm ²
Conductor cross section stranded max.	2.5 mm ²
Conductor cross section AWG/kcmil min.	24
Conductor cross section AWG/kcmil max	12
Stripping length	8 mm
Screw thread	M3
Connection method	Screw connection

General data

Width	30 mm
Height	75 mm
Depth	68 mm
Test voltage relay winding/relay contact	1 kV AC
Ambient temperature (operation)	0 °C ... 40 °C
Mounting position	Any
Housing material	Polycarbonate fiber reinforced PC-F
Color	green

Certificates / Approvals

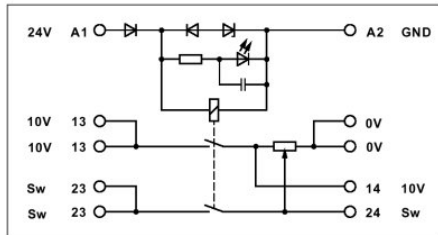


Certification

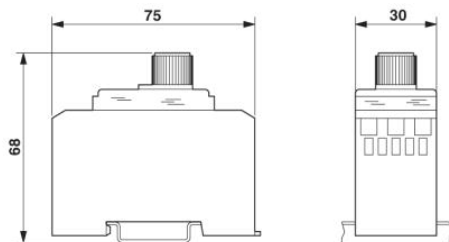
GOST

Diagrams/Drawings

Block diagram



Dimensioned drawing



Address

PHOENIX CONTACT Inc., USA
586 Fulling Mill Road
Middletown, PA 17057, USA
Phone (800) 888-7388
Fax (717) 944-1625
<http://www.phoenixcon.com>



© 2011 Phoenix Contact
Technical modifications reserved;