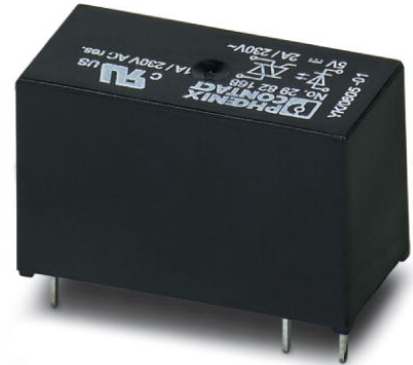



# OPT-24DC/230AC/ 2

Order No.: 2982171




<http://eshop.phoenixcontact.de/phoenix/treeViewClick.do?UID=2982171>

Pluggable miniature optocouplers, power optocouplers, input: 24 V DC, output: 24-253 V AC/ 2 A

Commercial data	
GTIN (EAN)	 4 017918 996970
Note	Made-to-order
sales group	G152
Pack	10 pcs.
Customs tariff	85364190
Catalog page information	Page 101 (IF-2011)

**Product notes**

WEEE/RoHS-compliant since:  
05/09/2006



<http://www.download.phoenixcontact.com>  
Please note that the data given here has been taken from the online catalog. For comprehensive information and data, please refer to the user documentation. The General Terms and Conditions of Use apply to Internet downloads.

## Technical data

Input data	
Nominal input voltage $U_N$	24 V DC
Input voltage range in reference to $U_N$	0.8 ... 1.2
Switching threshold "0" signal, voltage	< 8.4 V DC
Switching threshold "1" signal voltage	> 18 V DC

Typical input current at $U_N$	7 mA
Typical response time	10 ms
Typical turn-off time	10 ms
Type of protection	Protection against polarity reversal
Protective circuit/component	Polarity protection diode
Transmission frequency	10 Hz

#### Output data

Output nominal voltage	230 V AC
Output nominal voltage range	24 V AC ... 253 V AC
Limiting continuous current	2 A (see derating curve)
Maximum inrush current	30 A (10 ms)
Min. load current	25 mA
Leakage current	Typ. 1 mA
Surge current	30 A (10 ms)
Max. load value	4 A <sup>2</sup> s (tp = 10 ms, at 25 °C)
Voltage drop at max. limiting continuous current	≤ 1 V
Output circuit	2-conductor floating, zero voltage switch
Type of protection	Surge protection
Protective circuit/component	RC element

#### General data

Width	12.7 mm
Height	29 mm
Depth	15.7 mm
Ambient temperature (operation)	-25 °C ... 60 °C
Ambient temperature (storage/transport)	-25 °C ... 70 °C
Mounting position	Any
Assembly instructions	See derating curve
Operating mode	100% operating factor
Degree of protection	IP64
Inflammability class acc. to UL 94	V0
Name	Standards/regulations
Standards/regulations	IEC 60664
	EN 50178
	IEC 62103

Rated surge voltage / insulation	Basic insulation
Rated insulation voltage	250 V AC
Pollution degree	2
Surge voltage category	III

### Certificates / Approvals



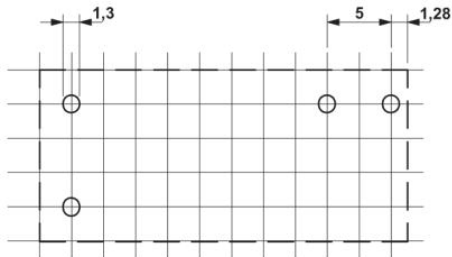
Certification CUL, UL

### Additional products

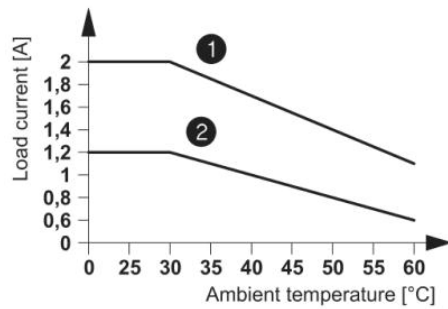
Item	Designation	Description
<b>General</b>		
2967837	PLC-BSC- 24DC/ 11C/ACT	14 mm PLC-IC basic terminal blocks with screw connection method, input voltage 24 V DC(without relay or optocoupler)
2967015	PLC-BSC- 24DC/21-21	14 mm PLC basic terminal blocks with screw connection method, input voltage 24 V DC(without relay or optocoupler)
2967772	PLC-BSC- 24DC/21HC	14 mm PLC-HC basic terminal blocks with screw connection method, input voltage 24 V DC(without relay or optocoupler)
2967264	PLC-BSC- 48DC/21-21	14 mm PLC basic terminal blocks with screw connection method, input voltage 48 V DC(without relay or optocoupler)
2967798	PLC-BSC- 48DC/21HC	14 mm PLC-HC basic terminal blocks with screw connection method, input voltage 48 V DC(without relay or optocoupler)
2912400	PLC-BSP- 24DC/ 11C/ACT	14 mm PLC basic terminal blocks with spring-cage connection method, input voltage 24 V DC(without relay or optocoupler)
2912439	PLC-BSP- 24DC/21-21	14 mm PLC basic terminal blocks with spring-cage connection method, input voltage 24 V DC(without relay or optocoupler)
2912345	PLC-BSP- 24DC/21HC	14 mm PLC basic terminal blocks with spring-cage connection method, input voltage 24 V DC(without relay or optocoupler)
2912455	PLC-BSP- 48DC/21-21	14 mm PLC basic terminal blocks with spring-cage connection method, input voltage 48 V DC(without relay or optocoupler)
2912361	PLC-BSP- 48DC/21HC	14 mm PLC basic terminal blocks with spring-cage connection method, input voltage 48 V DC(without relay or optocoupler)

## Diagrams/Drawings

### Drilling plan/solder pad geometry

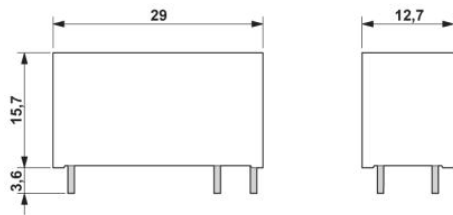


### Diagram



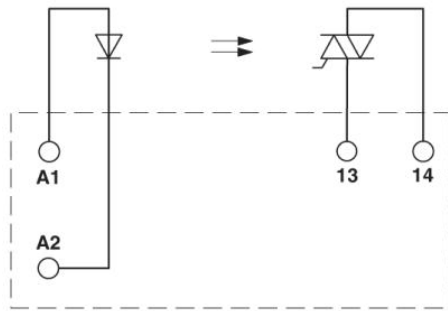
- ① In rows with 10 mm spacing
- ② In rows with zero spacing

### Dimensioned drawing



Circuit diagram

---



**Address**

PHOENIX CONTACT Inc., USA  
586 Fulling Mill Road  
Middletown, PA 17057, USA  
Phone (800) 888-7388  
Fax (717) 944-1625  
<http://www.phoenixcon.com>



© 2011 Phoenix Contact  
Technical modifications reserved;