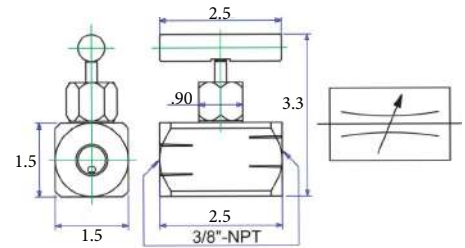


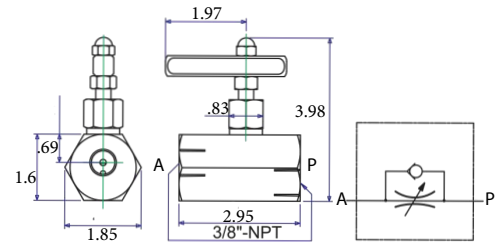
Part Number: VNO-33

- Used for normal flow control
- Can be used as a shut off valve
- Maximum working pressure : 10,000 psi / 700 Bar
- 1/4 NPT needle valve available on request



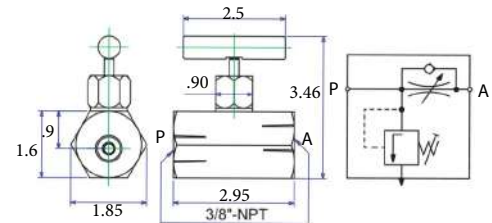
Part Number VNC-33

- Used for precise metering of flow
- Bypass flow control in return direction
- Temporary shut off only
- Maximum working pressure : 10,000 psi / 700 Bar



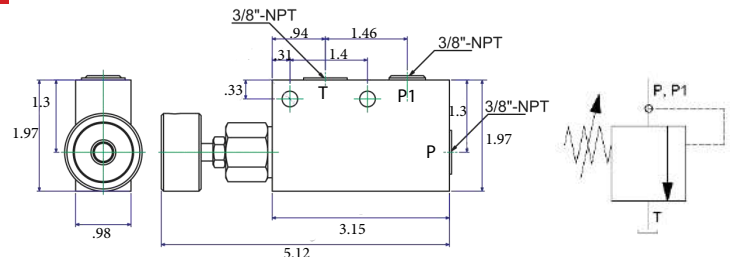
Part Number: VNR-33

- Needle valve style load holding
- Bypass flow control in return direction
- Built in pressure relief valve
- Maximum working pressure : 10,000 psi / 700 Bar



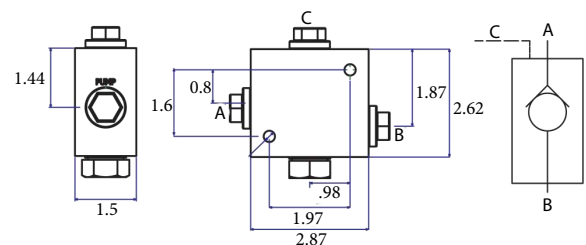
Part Number: VRO-33

- Inline pressure relief valve
- Adjustable from 100 - 10,000 psi
- Built in pressure relief valve
- Maximum working pressure : 10,000 psi / 700 Bar



Part Number: VCP-333

- Inline pilot operated check valve
- 3/8 NPT female threads
- Maximum working pressure : 10,000 psi / 700 Bar



Part Number: VCO-33

- Inline check valve
- 3/8 NPT male threads
- Maximum working pressure : 10,000 psi / 700 Bar

