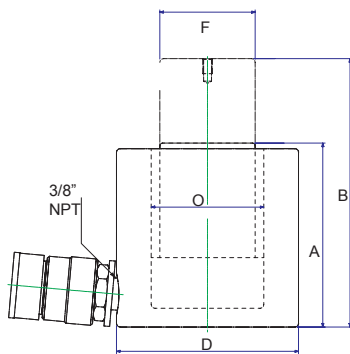


## LOW PROFILE (SHORT) CYLINDERS

Part Number	Capacity (tons)	Stroke (in)	Oil Capacity (in <sup>3</sup> )	(A) Collapsed Height (in)	(B) Extended Height (in)	(D) Outside Dia. (in)	(F) Rod Dia. (in)
CL10-1	10	1.50	3.35	3.50	4.97	2.75	1.50
CL20-2	20	1.75	7.77	3.88	5.63	3.63	2.00
CL30-2	30	2.44	15.85	4.63	7.06	4.00	2.50
CL50-2	50	2.38	22.91	5.02	7.19	4.88	2.75
CL100-2	100	2.50	44.25	5.56	7.81	6.50	3.63

## LOW PROFILE (SHORT) CYLINDERS continued

Part Number	(O) Bore Dia. (in)	Effective Area (in <sup>2</sup> )	Bolt Circle (in)	Thread	Thread Depth (in)	Weight (lbs.)
Saddle Mounting Holes						
CL10-1	1.69	2.43	1.03	M4	0.32	9
CL20-2	2.38	4.44	0.94	M5	0.32	11
CL30-2	2.88	6.50	1.42	M5	0.38	15
CL50-2	3.50	9.62	1.56	M6	0.38	24
CL100-2	5.00	19.67	2.19	M8	0.40	50



### DESCRIPTION

- Single acting, steel construction, heavy duty spring return.
- Angled coupler on CL10, CL20 and CL30 allows for more compact, low profile design.
- Collar threads with protective cover & base mounting holes.
- 3/8" NPTF port with high flow couple and dust cap.
- Durable exterior finish and ANSI 830.1 compliant.

