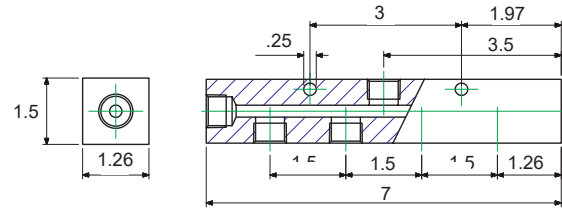


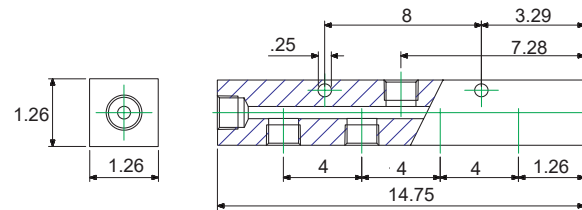
### Part Number: FRM-3-7

- 7 X 3/8 NPT manifold block.
- Ideal as return manifold or when gauges are not required.
- Maximum working pressure : 10,000 psi / 700 Bar.



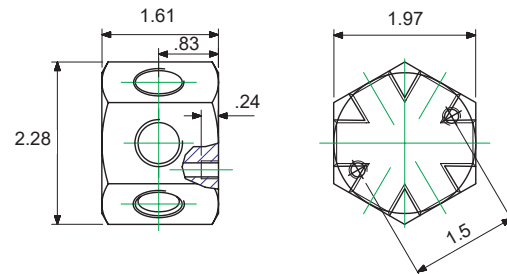
### Part Number: FRM-3-14

- 7 X 3/8 NPT manifold block.
- Larger gap between ports ideal for use with gauges.
- Maximum working pressure : 10,000 psi / 700 Bar.



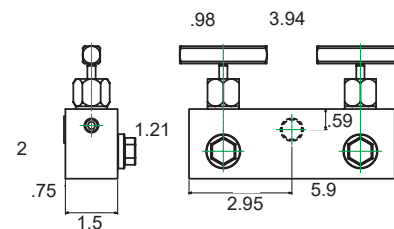
### Part Number: FRM-6

- 6 X 3/8 NPT manifold block.
- Hex design to allow for multiple angle connection.
- Maximum working pressure : 10,000 psi / 700 Bar.



### Part Number: VMN-2-3

- 3 X 3/8 NPT ports.
- Built in needle valves for 2 outlet flow control.
- Maximum working pressure : 10,000 psi / 700 Bar.



### Part Number: VMN-4-3

- 5 X 3/8 NPT manifold block.
- Built in needle valves for 4 outlet flow control.
- Maximum working pressure : 10,000 psi / 700 Bar.

