

## MHL Series “Mini-Flow” Heatless Regenerative Dryers

### Extremely dry air for point of use and OEM applications.

Compressed air dryers MHL-3 through MHL-50 are compact, simple to install, and easy to maintain. These dryers deliver a -40°F pressure dew point to protect pneumatic equipment and processes from the harmful and costly effects of compressed air moisture. In critical applications, MHL Series dryers can deliver a -100°F pressure dew point.

Each MHL Series dryer has advanced purge savings capability to minimize the waste of valuable compressed air. When the dryer is wired directly to an air compressor pressure switch or to auxiliary contacts, the dryer purge valves will open/close in parallel with the loading/unloading of the air compressor or point-of-use process. Stored memory in the dryer controller resumes the dryer cycling at the point where it left off.

### Models MHL-3 through MHL-50 are ideal for:

- Laboratories
- Gas generators
- OEM applications
- Critical points of use
- Protecting outdoor air lines



### FEATURES

3 through 50 SCFM

-40°F or -100°F pressure dew point

Automatic controller

No purge loss when compressor unloads

### BENEFITS OF THE MHL SERIES

Compact // Easy installation // Dependable

[vanairsystems.com](http://vanairsystems.com)

### STANDARD EQUIPMENT

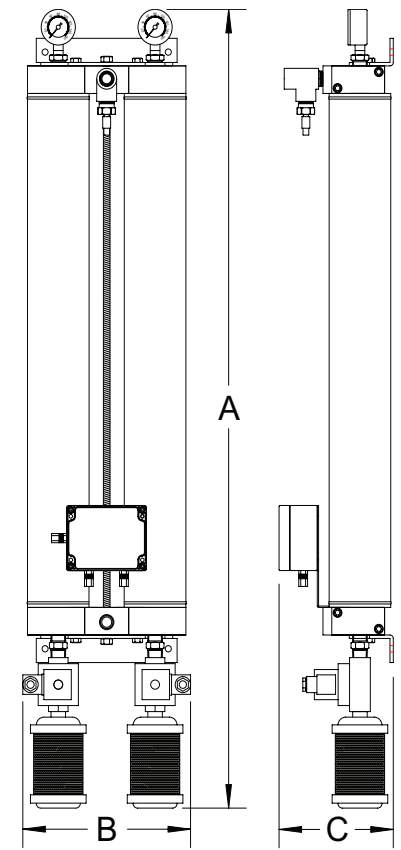
- Molecular Sieve desiccant
- Integrated cycle timer
- Control valves
- Tower pressure gauges
- Purge exhaust mufflers
- Visual moisture indicator
- 115V/1/50-60 Hz supply power
- Wall mounting brackets

### OPTIONAL EQUIPMENT

- Coalescing pre-filter
- Particulate after-filter
- Floor stand kit
- Explosion proof design (class I, groups C & D)
- 230V/1/50-60Hz supply power
- Digital dew point meter with alarm contact and recorder output (shipped separately)

### DIMENSIONS & SPECIFICATIONS

Model No.	A		B		C		In/Out Conn.	Weight	
	in	cm	in	cm	in	cm		lbs	kg
MHL-3	13 5/8	35	7 1/2	19	5 1/4	14	3/8" NPT	8	4
MHL-6	18 1/4	46	7 1/2	19	5 1/4	14	3/8" NPT	9	4
MHL-9	17 1/4	44	7 1/2	19	5 1/4	14	3/8" NPT	10	5
MHL-12	20 1/8	51	7 1/2	19	5 1/4	14	3/8" NPT	11	5
MHL-16	33	84	9 1/2	25	6 1/2	17	1/2" NPT	29	14
MHL-25	42	107	9 1/2	25	6 1/2	17	1/2" NPT	34	16
MHL-35	39 1/4	100	10	26	7	18	1/2" NPT	58	27
MHL-50	47 1/2	121	10	26	7	18	1/2" NPT	65	30



### MAXIMUM CAPACITIES SCFM / Nm3hr for -40°F PDP

Model No.	80 PSIG 5.5 BARG		90 PSIG 6.2 BARG		100 PSIG 10.3 BARG		110 PSIG 7.6 BARG		120 PSIG 8.3 PSIG	
	SCFM	Nm3hr	SCFM	Nm3hr	SCFM	Nm3hr	SCFM	Nm3hr	SCFM	Nm3hr
MHL-3	2.0	3.2	2.5	4.0	3	4.8	3.3	5.3	3.5	6.0
MHL-6	4.1	6.6	5.0	8.0	6	9.6	6.5	10.5	7.0	11.3
MHL-9	6.1	9.8	7.5	12.1	9	14.5	9.8	15.8	10.6	17.0
MHL-12	8.2	13.1	10.0	16.1	12	19.3	13.0	21.0	14.1	23.0
MHL-16	10.9	17.5	13.3	21.4	16	25.7	17.4	28.0	18.8	30.2
MHL-25	17.1	27.5	20.8	33.4	25	40.2	27.2	43.7	29.4	47.2
MHL-35	23.9	40.6	29.2	49.6	35	59.5	38.1	64.8	41.2	70.0
MHL-50	34.1	58.0	41.7	70.9	50	85.0	54.5	92.6	58.8	99.9

Maximum capacities are based on 100°F inlet temperature, 100% RH. Maximum working pressure is 150 PSIG

### RECOMMENDED FILTERS

Model No.	Pre-filter	After-filter
MHL-3 to MHL-12	F200-25-3/8-C	F200-25-3/8-RB
MHL-16 to MHL-25	F200-25-1/2-C	F200-25-1/2-RB
MHL-35 to MHL-50	F200-55-1/2-C	F200-55-1/2-RB

### REGENERATIVE DRYERS MUST HAVE CLEAN, OIL-FREE INLET AIR

**Lubricated compressors:** Dryer must be equipped with pre-filters to prevent desiccant contamination. An after-filter should be installed downstream of the dryer to prevent desiccant particle migration.

**Non-lubricated compressors:** A particulate or coalescing pre-filter is recommended to prevent pip scale and dust from fouling the dryer. An after-filter must be installed downstream of the dryer to prevent desiccant particle migration.

2950 Mechanic Street, Lake City, PA 16423, USA | Toll Free Phone 800-840-9906 | Corporate Fax 814-774-0778 | Order Entry Fax 814-774-3482

Distributed By:



## MHL Series - PDF Downloads

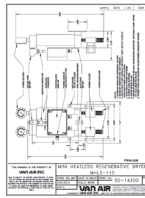
### Installation, Operation and Maintenance Manuals

MHL3 through MHL50

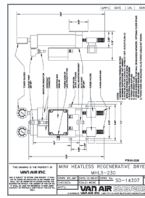


### Sales Drawings

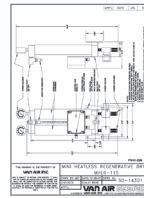
MHL3-115



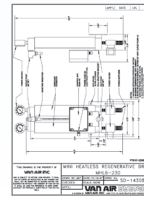
MHL3-230



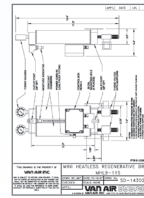
MHL6-115



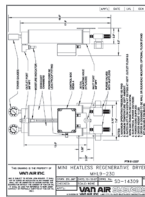
MHL6-230



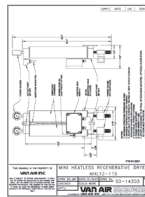
MHL9-115



MHL9-230



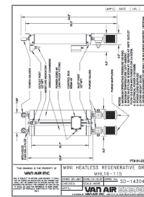
MHL12-115



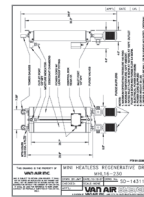
MHL12-230



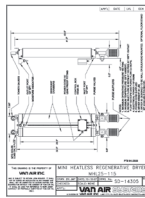
MHL16-115



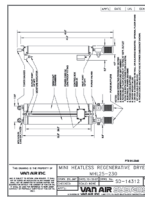
MHL16-230



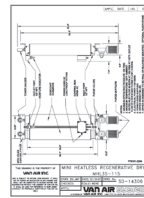
MHL25-115



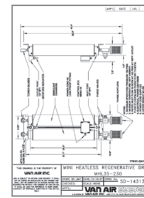
MHL25-230



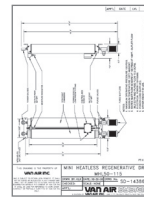
MHL35-115



MHL35-230



MHL50-115



MHL50-230

