

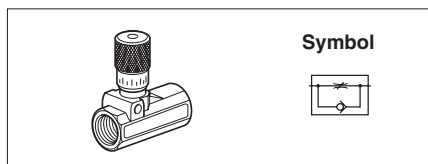
- Micrometer type adjustment
- Fine control
- Integral mounting hole
- Non-return and needle valves



**Operating and additional information**

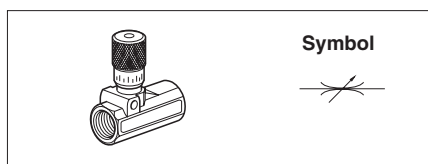
Operating pressure: 0 to 17 bar  
 Flow: See curve below  
 Operating temperature: -40°C to +80°C  
 Body material: Brass  
 Control knob: Aluminium  
 Adjustment mode: Knurled knob

**Flow Control with By-pass**



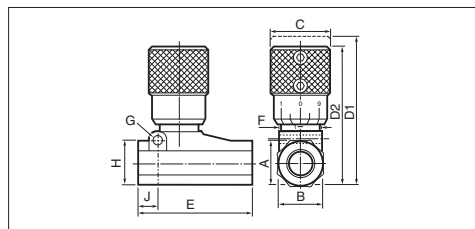
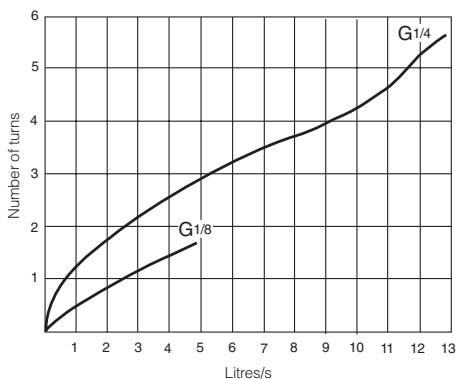
Thread	Number of turns	Qmax input at 6 bar, l/min	Weight kg	Order code
G1/8	5	300	0,076	<b>337A</b>
G1/4	6	780	0,134	<b>337B</b>

**Flow Control with By-directional Control**



Thread	Number of turns	Qmax input at 6 bar, l/min	Weight kg	Order code
G1/8	5	300	0,078	<b>338A</b>
G1/4	6	780	0,132	<b>338B</b>

**Micrometer Flow Control Valves - Dimensions**



Order code	Port size	A	B	C	D1 open	D2 closed	E	F	G	H	J
<b>337A</b>	G1/8	14,5	14,5	19	51	46	40	12	-	-	-
<b>337B</b>	G1/4	17,5	18,0	19	58	51	50	12	4,8	19	10
<b>338A</b>	G1/8	14,5	14,5	19	51	46	40	12	-	-	-
<b>338B</b>	G1/4	17,5	18,0	19	58	51	50	12	4,8	19	10