

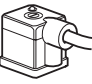
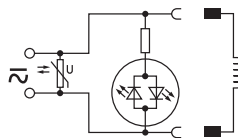
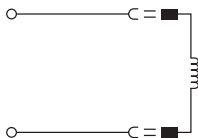


## Solenoid Connectors / Cable Plugs EN175301-803

	Description	Order code 15mm Form C/ISO15217 Suitable for B3 & B4 valves	Order code 22mm Industrial Form B Suitable for B5 valves
With large headed screw suitable for mounting in inaccessible or recess position 	Standard IP65	<b>P8C-C</b>	
	24V DC LED and protection IP65	<b>P8C-C26C</b>	
	110V AC LED and protection IP65	<b>P8C-C21E</b>	
With standard screw 	Standard IP65 without flying lead	<b>P8C-D</b>	<b>3EV10V10</b>
	With LED and protection 24V AC/DC	<b>P8C-D26C</b>	<b>3EV10V20-24</b>
	With LED and protection 110V AC	<b>P8C-D21E</b>	<b>3EV10V20-110</b>
	With LED and protection 230V AC		<b>3EV10V20-230</b>
With cable 	Standard with 2m cable IP65	<b>P8L-C2</b>	
	Standard with 5m cable IP65	<b>P8L-C5</b>	
	24V AC/DC, 2m cable LED and protection IP65	<b>P8L-C226C</b>	
	24V AC/DC, 5m cable LED and protection IP65	<b>P8L-C526C</b>	<b>3EV10V20-24L5</b>
	24V AC/DC, 10m cable LED and protection IP65	<b>P8L-CA26C</b>	
	110V AC/DC, 2m cable LED and protection IP65	<b>P8L-C221E</b>	
	110V AC/DC, 5m cable LED and protection IP65	<b>P8L-C521E</b>	<b>3EV10V20-110L5</b>
	230V AC, 5m cable LED and protection IP65		<b>3EV10V20-230L5</b>



<b>P8C-C</b>
<b>P8C-D</b>
<b>P8L-C2</b>
<b>P8L-C5</b>
<b>3EV10V10</b>
<b>3EV290V10</b>

<b>P8C-D26C</b>	<b>P8L-C226C</b>
<b>P8C-D21E</b>	<b>P8L-C526C</b>
<b>P8C-C26C</b>	<b>P8L-CA26C</b>
<b>P8C-C21E</b>	<b>P8L-C221E</b>
	<b>P8L-C521E</b>
<b>3EV10V20-24</b>	<b>3EV10V20-24L5</b>
<b>3EV10V20-110</b>	<b>3EV10V20-110L5</b>
<b>3EV10V20-230</b>	<b>3EV10V20-230L5</b>