

P
 Precision / Proportional
 Air Preparation Products
 Dial
 Regulators
 P3EA32
 P3BA45
 P3RA102
 P3RA171
 Electronic
 Proportional

51R

- Pressure reference indicating dial face
- Non-rising, pressure-adjustment dial
- Self-relieving
- Full pressure adjustment in less than one full turn
- Recommended for pilot-air applications

52R, 53R, 54R

- Balanced poppet design
- Non-rising, pressure-adjusting dial
- High-relief flow (3/16" relief orifice)
- Two 1/4" gauge ports
- Piston operated



Operating information

Adjusting range pressure: 2 to 40 PSIG (0 to 2.8 bar)
 5 to 160 PSIG (0 to 11.0 bar)

Max supply pressure: 300 PSIG (20.7 bar)

Max operating temperature: 150°F (65.5°C)

For technical information see CD

Dial Regulators, relieving



	Port size	Flow capacity* SCFM (dm ³ /s)	Part number	
			Low pressure 2 to 40 PSIG (0.14 to 3 bar)	Standard pressure 5 to 160 PSIG (0.34 to 11 bar)
	1/4	0.7 (.3)	51R125RA	51R126RA
	1/4	117 (55)	52R125RA	52R126RA
	3/8	180 (85)	52R225RA	52R226RA
	1/2	195 (92)	52R325RA	52R326RA
	3/4	220 (104)	52R425RA	52R426RA
	3/4	400 (189)	53R425RA	53R426RA
	1	650 (307)	53R525RA	53R526RA
	1-1/4	700 (330)	53R625RA	53R626RA
	1-1/2	1,600 (755)	54R725RA	54R726RA
	2	1,600 (755)	54R825RA	54R826RA

* SCFM = Standard cubic feet per minute at 100 PSIG (6.9 bar) inlet, 90 PSIG (6.2 bar) no-flow secondary setting and 25 PSIG pressure drop.

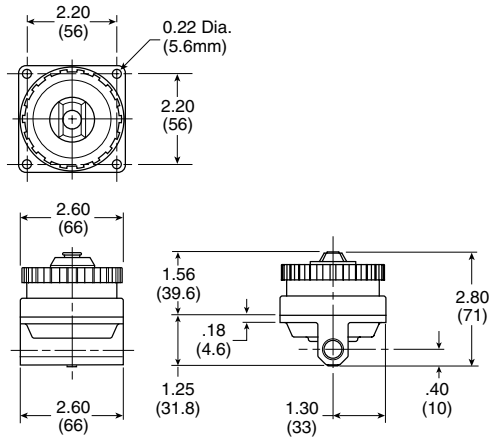
Service kits

Description	51R	52R	53R	54R
Adjustment dial knob	RRP-16-024	RRP-16-024	RRP-16-024	RRP-16-024
O-ring, repair kit	GRP-95-260	GRP-95-260	GRP-95-261	GRP-95-262
Piston and bonnet repair kit	RRP-95-765	RRP-95-766	RRP-95-766	RRP-95-766
Piston bottom and o-ring seal		RRP-95-192	RRP-95-192	RRP-95-192
Spring, regulation, belleville washer –				
2 to 40 PSIG (2.8 bar)	RRP-95-906	RRP-95-906	RRP-95-906	RRP-95-906
5 to 160 PSIG (11.0 bar)	RRP-95-905	RRP-95-905	RRP-95-905	RRP-95-905
Spring, main valve				RRP-95-024
Tamper resistant kit	RRP-95-585	RRP-95-585	RRP-95-585	RRP-95-585
Valve, main with u-cup seal & bottom plug		RRP-95-914		
Valve, main with u-cup seal		RRP-95-151		
Valve, main with o-ring seal			RRP-95-152	RRP-95-153
Valve, pilot with o-ring and valve spring	RRP-96-934	RRP-96-934	RRP-96-935	RRP-96-935

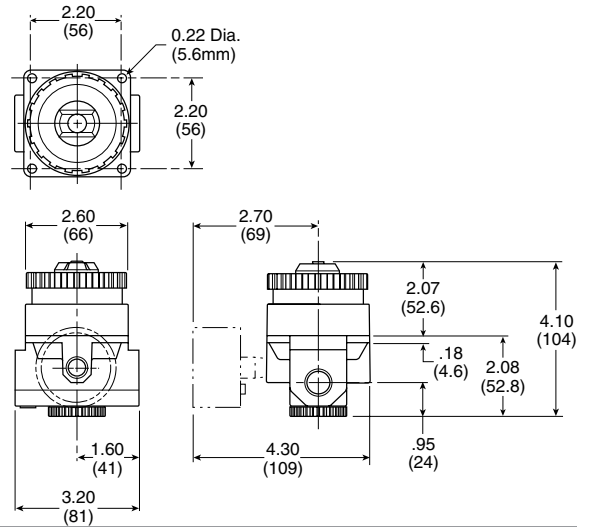
Most popular.



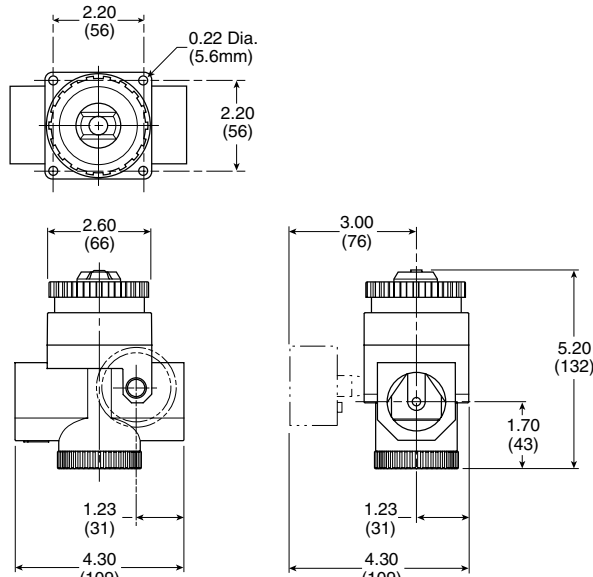
51R



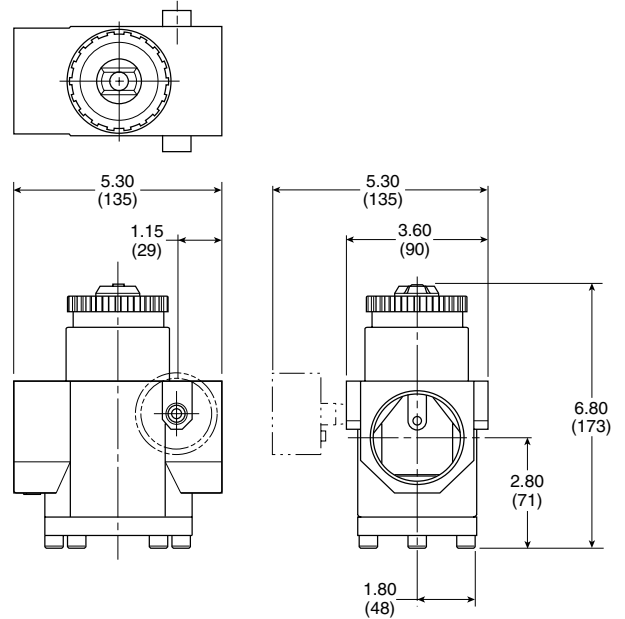
52R



53R



54R



Specifications

Description	51R	52R	53R	54R
Bleed rate	0.05 SCFM	0.05 SCFM	0.05 SCFM	0.05 SCFM
Gauge port	—	Two ports 1/4	Two ports 1/4	Two ports 1/4
Port threads	1/4	1/4, 3/8, 1/2, 3/4	3/4, 1, 1-1/4	1-1/2, 2
Weight	1.3 lb. (0.5 kg)	2.3 lb. (1.04 kg)	4.0 lb. (1.8 kg)	9 lb. (4.1 kg)

Material specifications

Description	
Body	Zinc
Bonnet	Zinc / brass
Piston	Acetal
Seals	Nitrile
Springs	Steel
Valve assembly	Brass / nitrile / acetal

WARNING
 Product rupture can cause serious injury.
 Do not connect regulator to bottled gas.
 Do not exceed maximum primary pressure rating.

CAUTION:
REGULATOR PRESSURE ADJUSTMENT –
 The working range of knob adjustment is designed to permit outlet pressures within their full range. Pressure adjustment beyond this range is also possible because the knob is not a limiting device. This is a common characteristic of most industrial regulators, and limiting devices may be obtained only by special design. For best performance, regulated pressure should always be set by increasing the pressure up to the desired setting.