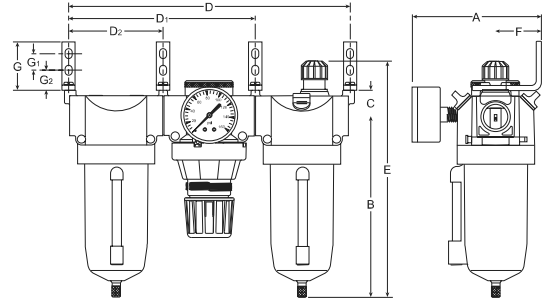
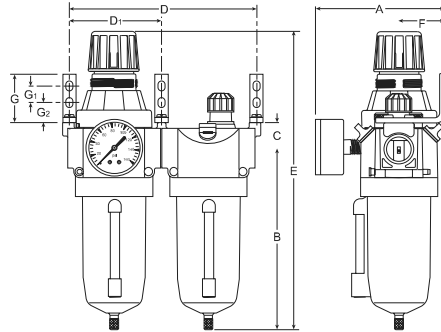
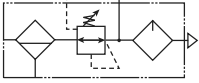


QIX Combinations – C20 / C21 Series

- See individual component pages for details.
- Gauges included on combinations.

B

Three-Unit Combo



C20-BL

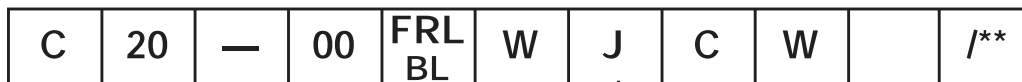


C20-FRL

C20-FRL Dimensions					
A 4.78 (121)	B 6.83 (173)	C .96 (24)	D* 10.60 (269)	D** 10.70 (271)	D1 7.13 (181)
D2 3.57 (91)	E 8.89 (226)	F 1.69 (43)	G 1.81 (46)	G1 .75 (19)	G2 .63 (16)
C20-BL Dimensions					
A 4.78 (121)	B 6.83 (173)	C .96 (24)	D* 7.31 (186)	D** 7.41 (188)	D1 3.57 (91)
E 11.27 (286)	F 1.69 (43)	G 1.81 (46)	G1 .75 (19)	G2 .63 (16)	

inches
 (mm)
 * 1/4 thru 3/4 Inch Port Insert Size
 ** 1 Inch Port Insert Size

Ordering Information



Adjustment Type
20 Knob
21 Tee Handle

Port Threads
— NPT
G* BSPP
* If ordering BSPP Port Inserts Separately - Order "G00" Unit

Port Size
02 1/4 Inch
03 3/8 Inch
04 1/2 Inch
06 3/4 Inch
08 1 Inch

Combination
BL 2-Unit
FRL 3-Unit

Regulator Reduced Pressure Range
B 0-60 PSIG
C 0-125 PSIG
D 0-250 PSIG

Engineering Change Designator
Will be entered at factory.

Elements
G 5 Micron
J 40 Micron

Drains and Options
K Non-Relieving
R Internal Auto Float Drain
S Automatic Pulse Drain

CAUTION:
REGULATOR PRESSURE ADJUSTMENT – The working range of knob adjustment is designed to permit outlet pressures within their full range. Pressure adjustment beyond this range is also possible because the knob is not a limiting device. This is a common characteristic of most industrial regulators, and limiting devices may be obtained only by special design. For best performance, regulated pressure should always be set by increasing the pressure up to the desired setting.

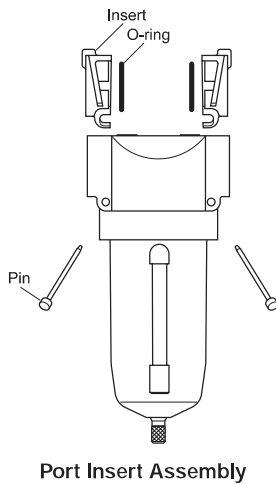
BOLD ITEMS ARE MOST POPULAR.

QIX Accessories

QIX Port Insert Kits & Accessories

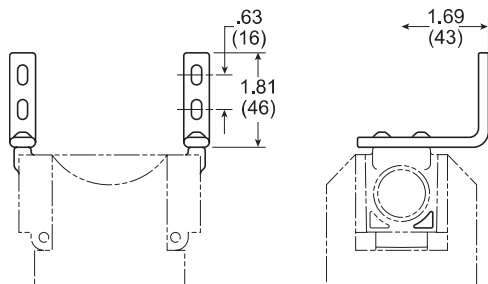
Port Insert Kits (includes o-rings & pins) NPT *BSPP*

Port Size	NPT	BSPP
1/4"	IK20Y	IK20YG
3/8"	IK20X	IK20XG
1/2"	IK20A	IK20AG
3/4"	IK20B	IK20BG
1"	IK20C	IK20CG
Combination Connector (connects 2 QIX units together)	IK20CC	IK20CC
Combination Porting Block (same as IK20CC, except with 1/4" top branch outlet)	IK20CP	IK20GCP
IK20CP Porting Block and 1908 Pressure Switch	PST20	—



QIX MK20 Mounting Brackets

Part Number: MK20-0100
 Kit contains 2 brackets and 4 screws

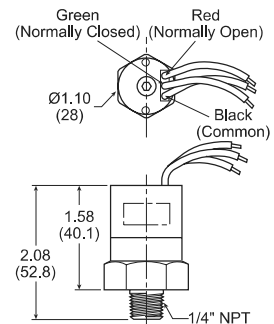


QIX IK20V Shut-Off Valve

This modular, 3-way ball valve attaches between the port insert and the inlet side of any QIX component. This valve shuts off the air pressure and vents the downstream pressure through a 1/8" NPTF port in the bottom of the valve. **The valve comes standard with a "lockout" feature as required by OSHA Standard 1910.147**
 Valve adds 1.4" to width of system.



Pressure Switch – P01908



Features:

- Inline Mounting
- 5 amp Rated Snap Action Micro Switch
- Brass Body
- Compact Size
- Flying Leads Electrical Connection
- IP65 Rated
- Field Adjustable 25-100 PSIG
- +/- 2% Repeatability
- Single Pole / Double Throw Switch

Specifications

Electrical.....	5 AMP, 12/24VDC, 125/250VAC
Maximum Inlet Pressure	300 PSIG (20 bar)
Mechanical Life	2x10 ⁶ at 75 PSIG (5 bar)
Electrical Connection.....	18" Flying Leads
Electrical Protection.....	IP65
Pressure Differential "Dead Band"	15 to 20 PSIG (1.03 to 1.39 bar)
Repeatability	±2% at 70°F (20°C) Ambient
Temperature Range.....	-40°F to 180°F (-40°C to 80°C)
Weight.....	0.23 lb. (0.11 Kg)
Diaphragm.....	Nitrile
Housing.....	Brass