

- The P3BA208 uses a pneumatic input signal to accurately control output pressure based on a predetermined ratio
- A balanced supply valve minimizes the effects of supply pressure variation
- An aspirator tube compensates downstream pressure droop under flowing conditions
- A separate control chamber isolates the diaphragm from the main flow to eliminate hunting and buzzing
- Unit construction allows servicing without removal



**P3BA208 Series**  
 1/4" port size

<b>Operating information</b>			
Signal : Output	1:1	1:2	1:3
Output pressure, maximum:	150 PSIG (10 bar)	150 PSIG (10 bar)	150 PSIG (10 bar)
Supply pressure, maximum:	250 PSIG (17 bar)	250 PSIG (17 bar)	250 PSIG (17 bar)
Flow capacity – 100 PSIG, (7 bar), supply 20 PSIG, (1.5 bar) output	45 SCFM (76.5 m <sup>3</sup> /HR)	45 SCFM (76.5 m <sup>3</sup> /HR)	45 SCFM (76.5 m <sup>3</sup> /HR)
Exhaust capacity – Downstream pressure 5 PSIG (.35 bar) above 20 PSIG (1.5 bar) setpoint	11 SCFM (18.7 m <sup>3</sup> /HR)	11 SCFM (18.7 m <sup>3</sup> /HR)	11 SCFM (18.7 m <sup>3</sup> /HR)
Sensitivity, water column:	.250" (.64 cm)	.500" (1.27 cm)	.750" (1.9 cm)
Ratio accuracy – % of 100 PSIG (7 bar) output span % of output span with 100 PSIG (7 bar) input span	1.0 —	1.0 —	1.0 —
Supply pressure effect – for change of 100 PSIG (7 bar)	0.10 PSIG (.007 bar)	0.20 PSIG (.014 bar)	0.30 PSIG (.021 bar)
Ambient temperature:	-40°F to 200°F (-40°C to 93°C)	-40°F to 200°F (-40°C to 93°C)	-40°F to 200°F (-40°C to 93°C)
For technical information see CD			

**P3BA208**  
**Precision Pneumatic Input Signal Amplifier**



Port size	Pilot ratio	Part number
1/4"	1:1	<b>P3BA20812</b>
1/4"	1:2	<b>P3BA20822</b>
1/4"	1:3	<b>P3BA20823</b>

**Note:** Other spring ranges, port sizes, and options available. Please consult factory.

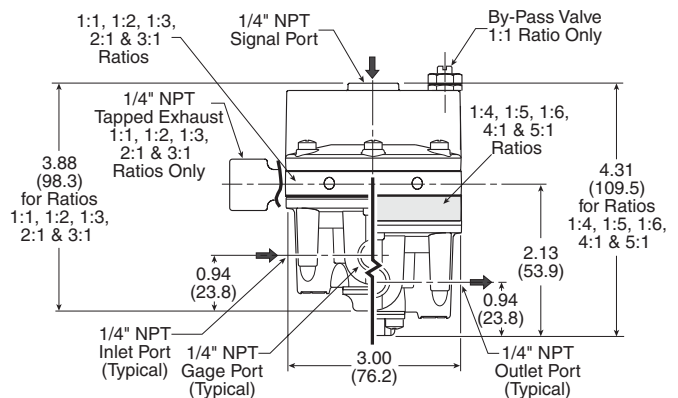
**Service kits**

1:1 ratio	<b>PS19513-11</b>
1:1 ratio w/ by-pass valve	<b>PS19513-11</b>
1:2 ratio	<b>PS19513-12</b>
1:3 ration	<b>PS19513-13</b>
Mounting bracket	<b>PS09921</b>

**Material specifications**

Body and housing	Aluminum
Elastomers	Nitrile on dacron fabric
Trim	Zinc plated steel, brass

Most popular.



**Mounting bracket**

