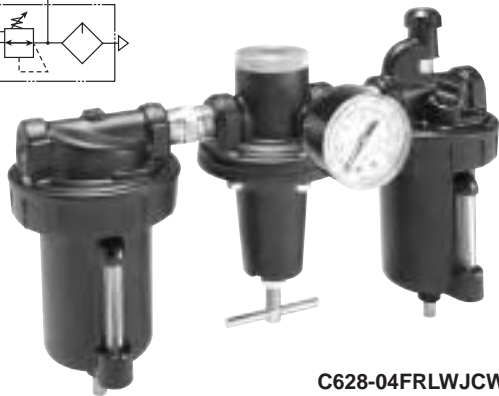
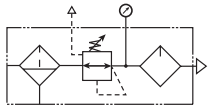


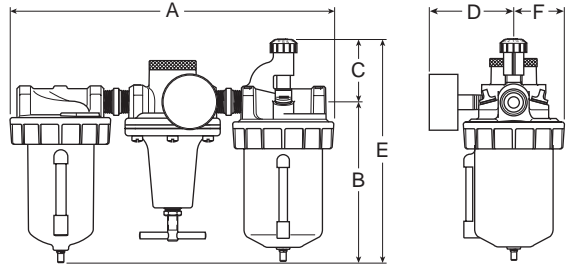
**Standard Combinations – C628 Series**

- See individual component pages for details.
- Gauges included on combinations.

**Three-Unit Combo**



C628-04FRLWJCW Shown



Series	Port	Model Numbers
C628	1/4"	C628-02FRLWJCW
	3/8"	C628-03FRLWJCW
	1/2"	C628-04FRLWJCW
	3/4"	C628-06FRLWJCW
	1"	C628-08FRLWJCW
	1-1/4"	C628-10FRLWJCW
	1-1/2"	C628-12FRLWJCW

For other models, refer to ordering information below.

C628 Standard Combination Dimensions					
A	B	C	D	E	F
<b>C628-02FRL, C628-03FRL</b>					
8.75 (222)	5.38 (137)	2.25 (57)	2.63 (67)	7.63 (194)	1.50 (38)
<b>C628-04FRL</b>					
10.75 (273)	5.75 (146)	2.38 (60)	2.86 (73)	8.13 (206)	1.89 (48)
<b>C628-06FRL, C628-08FRL</b>					
15.75 (400)	7.75 (197)	5.25 (133)	3.52 (89)	13.00 (330)	2.48 (63)
<b>C628-10FRL, C628-12FRL</b>					
16.50 (419)	8.13 (206)	6.00 (152)	3.86 (98)	14.13 (359)	2.64 (67)

Inches  
(mm)

• All dimensions nominal.

**Ordering Information**



Port Size
02 1/4 Inch
03 3/8 Inch
04 1/2 Inch
06 3/4 Inch
08 1 Inch
10 1-1/4 Inch
12 1-1/2 Inch

Filter Bowl Options			
Bowl	Capacity	Description	Size
B	5 oz.	Polycarbonate w/Plastic Bowl Guard	1/4" & 3/8"
B	8 oz.	Polycarbonate w/Plastic Bowl Guard	1/2"
E	16 oz.	Large Capacity wo/Sight Gauge	1/2"
E	32 oz.	Large Capacity wo/Sight Gauge	3/4" thru 1-1/2"
<b>W</b>	<b>5 oz.</b>	<b>Metal w/Sight Gauge</b>	<b>1/4" &amp; 3/8"</b>
<b>W</b>	<b>8 oz.</b>	<b>Metal w/Sight Gauge</b>	<b>1/2"</b>
<b>W</b>	<b>16 oz.</b>	<b>Metal w/Sight Gauge</b>	<b>3/4" thru 1-1/2"</b>

Elements
G 5 Micron
<b>J 40 Micron</b>

Regulator Reduced Pressure Range
<b>C 0-125 PSIG</b>
<b>D 0-250 PSIG</b>

Drains and Options
H Button Head Fill Fitting (Lubricator)
K Non-Relieving Regulator
Q External Heavy Duty Auto Drain (Filter)
R Internal Auto Drain (Filter)
X9* Manual Twist Drain on Plastic Bowl Lubricator (Increases Product Length by 9/16 Inch)

\* Not Available with "W" Bowl.

**CAUTION:**  
**REGULATOR PRESSURE ADJUSTMENT** – The working range of knob adjustment is designed to permit outlet pressures within their full range. Pressure adjustment beyond this range is also possible because the knob is not a limiting device. This is a common characteristic of most industrial regulators, and limiting devices may be obtained only by special design. For best performance, regulated pressure should always be set by increasing the pressure up to the desired setting.

Lubricator Bowl Options			
Bowl	Capacity	Description	Size
B	5 oz.	Polycarbonate w/Plastic Bowl Guard	1/4" & 3/8"
B	8 oz.	Polycarbonate w/Plastic Bowl Guard	1/2"
E	16 oz.	Large Capacity wo/Sight Gauge	1/2"
E	32 oz.	Large Capacity wo/Sight Gauge	3/4" thru 1-1/2"
<b>W</b>	<b>5 oz.</b>	<b>Metal w/Sight Gauge w/Drain</b>	<b>1/4" &amp; 3/8"</b>
<b>W</b>	<b>8 oz.</b>	<b>Metal w/Sight Gauge w/Drain</b>	<b>1/2"</b>
<b>W</b>	<b>16 oz.</b>	<b>Metal w/Sight Gauge w/Drain</b>	<b>3/4" thru 1-1/2"</b>

**BOLD ITEMS ARE MOST POPULAR.**

