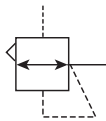
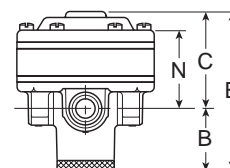
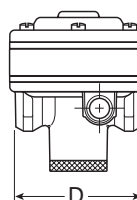
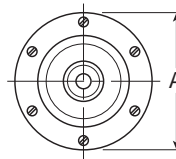


R119 Pilot Operated Regulators



Features

- Adapted for Control by a Remote or Distant Small Pilot Regulator. Ideal for Maximum Capacity Requirements in Applications where Units are Not Readily Accessible
- High Flow Performance Featuring Rugged Design for the Most Demanding Applications
- Ideal for Those Installations Calling for Constant Pressure with Wide Variation in Flow
- Diaphragm Operated Design with Balanced Poppet and Constant Bleed Pilot for Quick and Accurate Regulation.
- Secondary Aspiration Plus Balanced Poppet Provides Quick Response and Accurate Pressure Regulation
- Reverse Flow Available
- High Flow: 1/4" - 100 SCFM[§]
 3/8" - 110 SCFM[§]
 1/2" - 150 SCFM[§]



Port Size	NPT Relieving	BSPP Relieving
Without Gauge 0-125 PSIG Reduced Pressure		
1/4"	R119-02J	R119G02J
3/8"	R119-03J	R119G03J
1/2"	R119-04J	R119G04J

R119 Regulator Dimensions					
A	B	C	D	E	N
R119-02J, R119-03J					
3.00 (76)	1.38 (35)	2.10 (53)	2.74 (70)	3.48 (88)	1.69 (43)
R119-04J					
3.56 (90)	1.56 (40)	2.31 (59)	3.34 (85)	3.87 (98)	1.93 (49)

Bold Items are Most Popular.

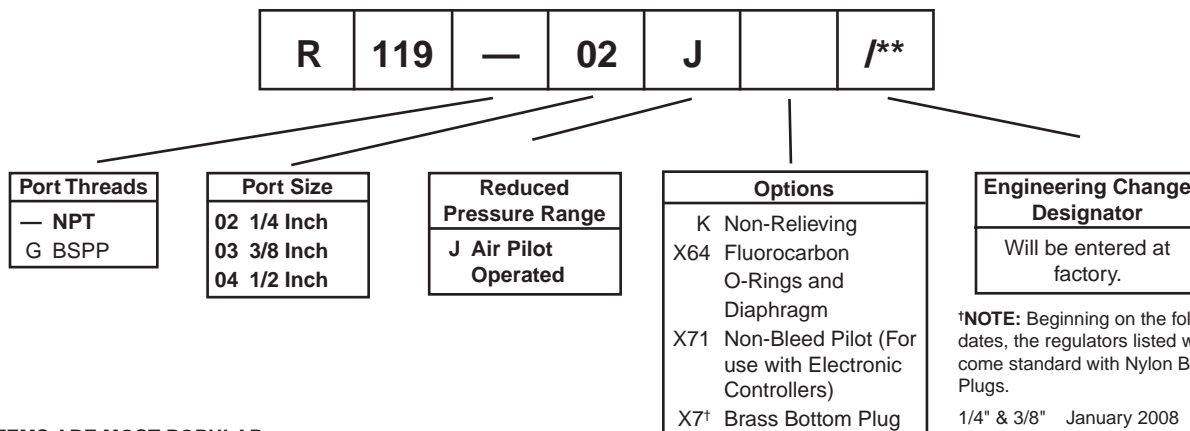
For other models refer to ordering information below.

§ SCFM = Standard cubic feet per minute at 100 PSIG inlet, 75 PSIG no flow secondary setting, and 20 PSIG pressure drop.

inches
(mm)

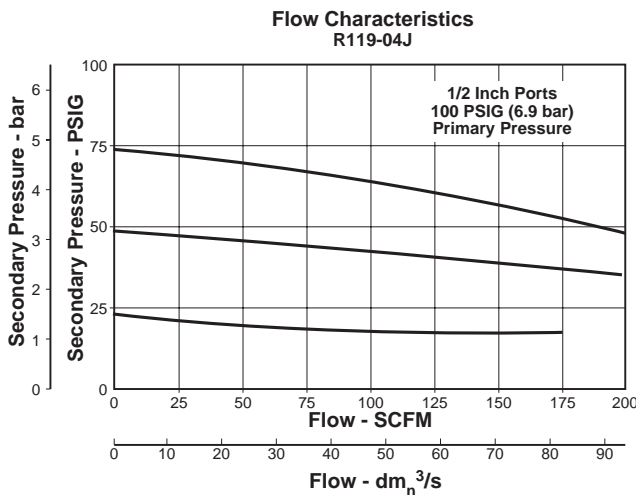
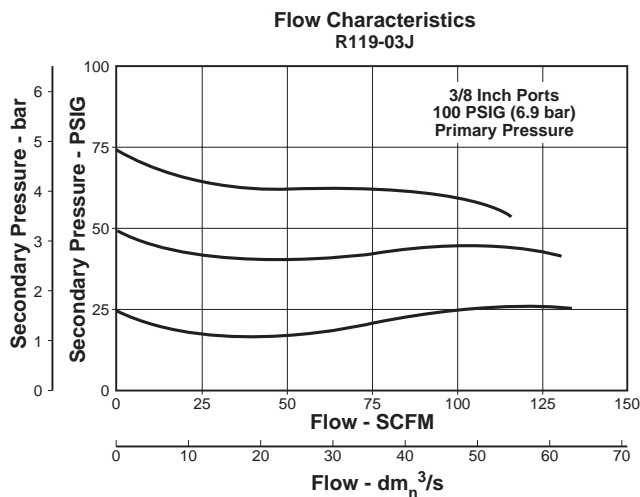
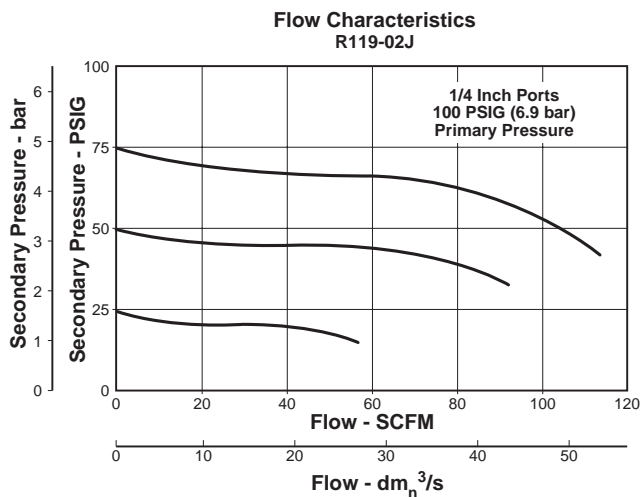
⚠ WARNING
 Do not connect regulator to bottled gas.
 Do not exceed maximum primary pressure rating.
 Product rupture can cause serious injury.

Ordering Information



BOLD ITEMS ARE MOST POPULAR.

Technical Information



R119 Regulator Kits & Accessories

Gauges –

- 2" Dial Size, 1/4" Back Connection
0 to 60 PSIG (0 to 400 kPa) K4520N14060
- 2" Dial Size, 1/4" Back Connection
0 to 160 PSIG (0 to 1100 kPa) K4520N14160
- 2" Dial Size, 1/4" Back Connection
0 to 300 PSIG (0 to 2068 kPa) K4520N14300

Repair Kits –

- Non-Relieving Diaphragm,
Valve Assembly (1/2")RK118X20A
- Non-Relieving Diaphragm,
Valve Assembly (1/4", 3/8")RK118X20Y
- Relieving Diaphragm,
Valve Assembly (1/2")RK119X20A
- Relieving Diaphragm,
Valve Assembly (1/4", 3/8")RK119X20Y

For Fluorocarbon Repair Kits, add X64 to Kit Number suffix.

Specifications

- Gauge Ports (2)** 1/4 Inch
- Port Threads** 1/4, 3/8, 1/2 Inch
- Reduced Pressure Range –**
Adjustable to within 5 to 7 PSIG of Supply Pressure
- Supply Pressure** 300 PSIG Maximum (20.4 bar)
- Air Consumption –**
Constant bleed from air pilot chamber: approx. 0.17 SCFM (10 SCFH)
- Temperature Rating** 40°F to 125°F (4.4°C to 52°C)
- Weight –**
R119-02J, R119-03J 1.6 lb. (0.73 kg) / Unit
19 lb. (8.62 kg) / 12-Unit Master Pack
R119-04J 2.6 lb. (1.18 kg) / Unit
21 lb. (9.53 kg) / 8-Unit Master Pack

Materials of Construction

- Body, Ring, Top Plate** Zinc
- Bottom Plug** Nylon
- Innervalve** Brass
- Seals** Buna N

