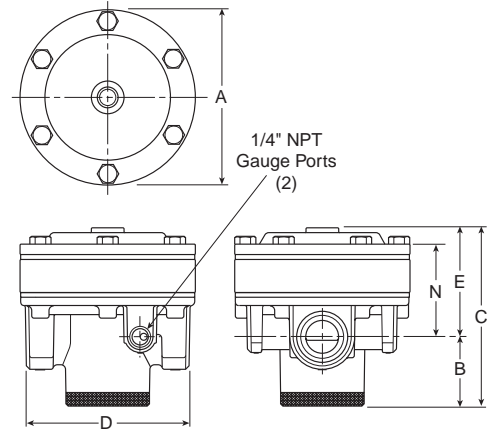
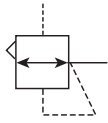


R119 Pilot Operated Regulators

Features

- Adapted for Control by a Remote or Distant Small Pilot Regulator. Ideal for Maximum Capacity Requirements in Applications where Units are Not Readily Accessible
- High Flow Performance Featuring Rugged Design for the Most Demanding Applications
- Ideal for Those Installations Calling for Constant Pressure with Wide Variation in Flow
- Diaphragm Operated Design with Balanced Poppet and Constant Bleed Pilot for Quick and Accurate Regulation.
- Secondary Aspiration Plus Balanced Poppet Provides Quick Response and Accurate Pressure Regulation
- Reverse Flow Version Available
- High Flow: 3/4", 1" - 300 SCFM[§],
 1-1/4" & 1-1/2" - 380+ SCFM[§]



Port Size	NPT Relieving	BSPP Relieving
Without Gauge 0-125 PSIG Reduced Pressure		
3/4"	R119-06J	R119G06J
1"	R119-08J	R119G08J
1-1/4"	R119-10J	R119G10J
1-1/2"	R119-12J	R119G12J

R119 Regulator Dimensions					
A	B	C	D	E	N
R119-06J, R119-08J					
4.72 (120)	1.87 (47)	2.94 (75)	4.38 (111)	4.81 (122)	2.47 (63)
R119-10J, R119-12J					
4.94 (125)	1.81 (46)	3.32 (84)	4.94 (125)	5.13 (130)	2.88 (73)

inches
(mm)

Bold Items are Most Popular.

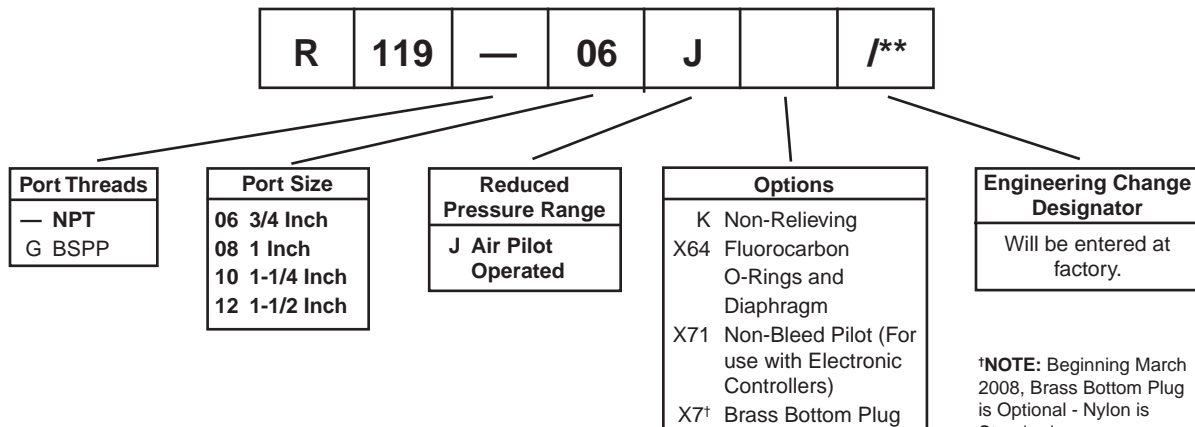
For other models refer to ordering information below.

§ SCFM = Standard cubic feet per minute at 100 PSIG inlet, 75 PSIG no flow secondary setting, and 20 PSIG pressure drop.

⚠ WARNING

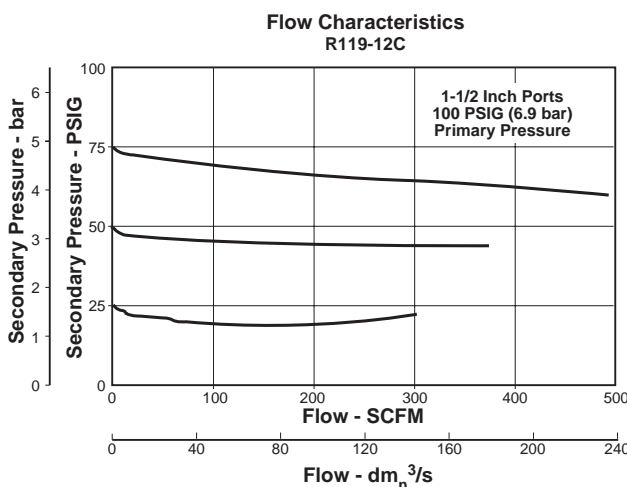
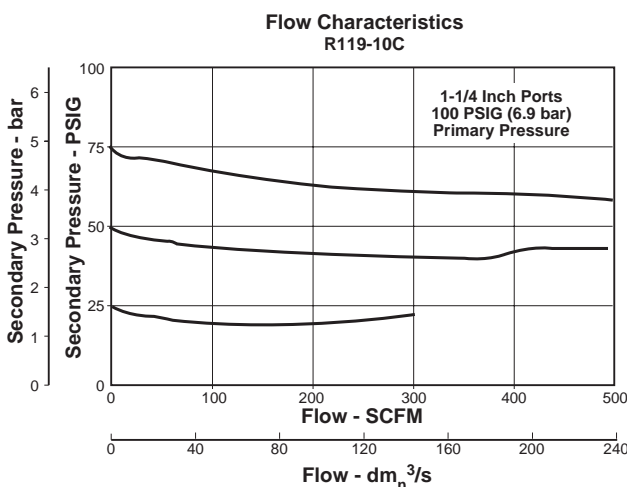
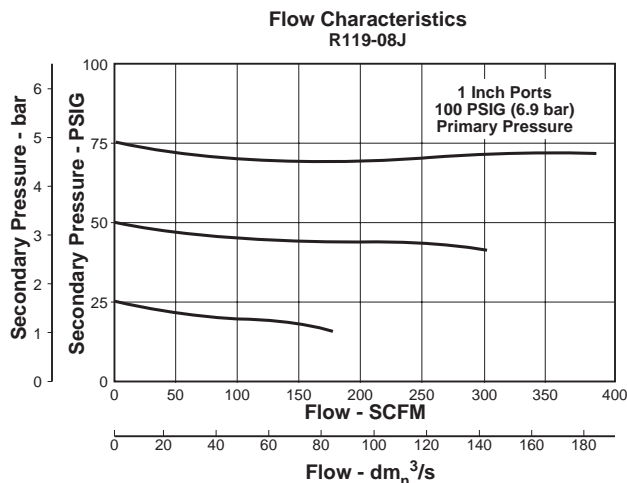
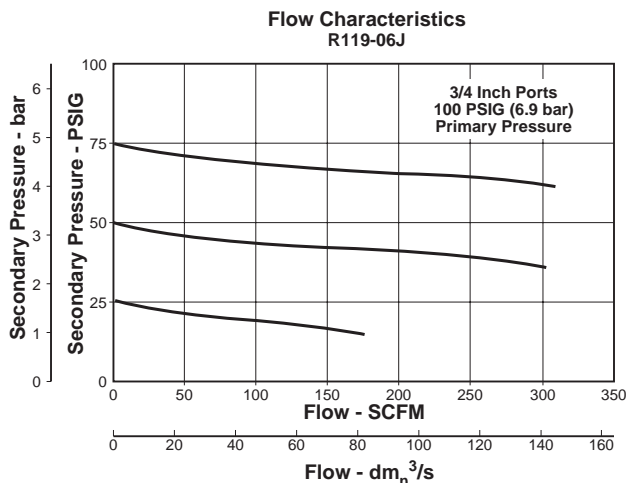
**Do not connect regulator to bottled gas.
 Do not exceed maximum primary pressure rating.
 Product rupture can cause serious injury.**

Ordering Information



BOLD ITEMS ARE MOST POPULAR.

Technical Information



R119 Regulator Kits & Accessories

Gauges –

- 2" Dial Size, 1/4" Back Connection
0 to 60 PSIG (0 to 400 kPa) K4520N14060
- 2" Dial Size, 1/4" Back Connection
0 to 160 PSIG (0 to 1100 kPa) K4520N14160
- 2" Dial Size, 1/4" Back Connection
0 to 300 PSIG (0 to 2068 kPa) K4520N14300

Repair Kits –

- Non-Relieving Diaphragm,
Valve Assembly (3/4", 1")RK118X20B
- Non-Relieving Diaphragm,
Valve Assembly (1-1/4", 1-1/2") RK118X20D
- Relieving Diaphragm,
Valve Assembly (3/4", 1")RK119X20B
- Relieving Diaphragm,
Valve Assembly (1-1/4", 1-1/2") RK119X20D

For Fluorocarbon Repair Kits, add X64 to Kit Number suffix.

Specifications

- Gauge Ports (2)**1/4 Inch
- Port Threads** 3/4, 1, 1-1/4, 1-1/2 Inch
- Reduced Pressure Range –**
Adjustable to Within 5 to 7 PSIG of Supply Pressure
- Supply Pressure**300 PSIG Maximum (20.4 bar)
- Air Consumption –**
Constant bleed from air pilot chamber: approx 0.17 SCFM (10 SCFH)
- Temperature Rating**40°F to 125°F (4.4°C to 52°C)
- Weight –**
R119-06J, R119-08J 5.2 lb. (2.36 kg) / Unit
42 lb. (19.05 kg) / 8-Unit Master Pack
R119-10J, R119-12J 5.6 lb. (2.54 kg) / Unit
46 lb. (20.87 kg) / 8-Unit Master Pack

Materials of Construction

- Body, Ring, Top Plate**Zinc
- Bottom Plug** Nylon
- Innervalve** Brass
- Seals** Buna N

