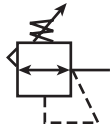


R20 & R21 QIX Regulators

B



R21



R20

Features

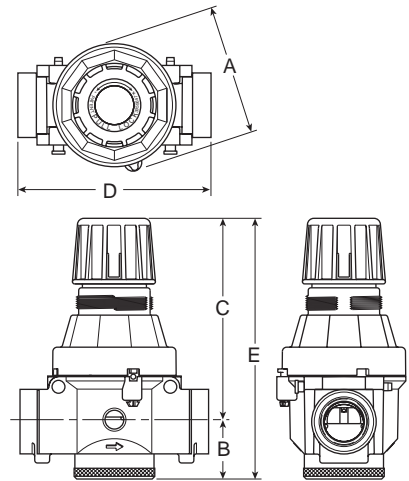
- Unique Interchangeable QIX Inserts Allow One Module to Accommodate 5 Port Sizes 1/4", 3/8", 1/2", 3/4", 1"
- Piston Operated for High Flow Performance
- Secondary Aspiration Plus Balanced Poppet Provides Quick Response and Accurate Pressure Regulation
- Panel Mountable
- High Flow: 250 SCFM for 3/4" & 1" Port Sizes

R20 Features

- Push-to-Lock, Pull-to-Adjust, Remove-for-Tamper-Resistant Knob Feature

R21 Features

- Heavy Duty Tee Handle Adjustment

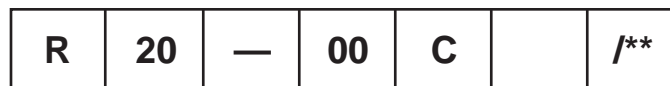


R20 / R21 Regulator Dimensions					
A	B	C	D*	D**	E
R20					
3.03 (77)	.75 (86)	4.70 (119)	3.50 (89)	4.50 (114)	6.10 (155)
R21					
3.03 (77)	.75 (86)	5.58 (142)	3.50 (89)	4.50 (114)	6.33 (161)

inches
(mm)

* 1/4 thru 3/4 Inch Port Insert Size
 ** 1 Inch Port Insert Size

Ordering Information

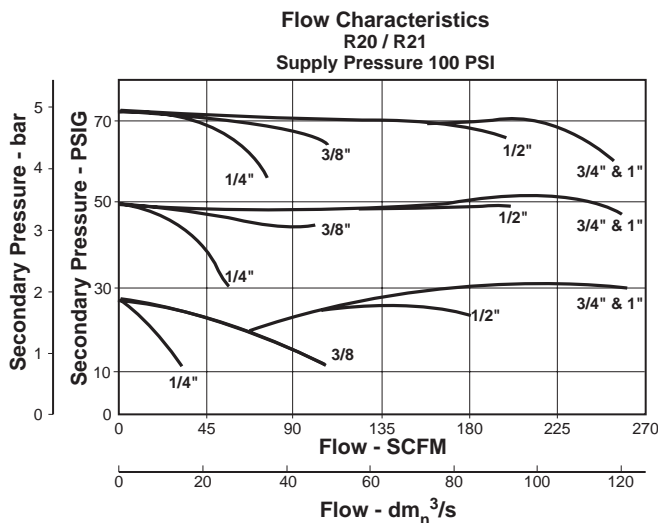


Adjustment Type 20 Knob 21 Tee-Handle	Port Threads — NPT G* BSPP *If ordering BSPP Port Inserts Separately - Order "G00" Unit	Port Size 00 No Port Inserts 02 1/4 Inch 03 3/8 Inch 04 1/2 Inch 06 3/4 Inch 08 1 Inch	Reduced Pressure B 0-60 PSIG C 0-120 PSIG D 0-250 PSIG	Options P Panel Mount Nut (Plastic) G Gauge K Non-Relieving	Engineering Change Designator Will be entered at factory.
--	---	--	---	---	---

BOLD ITEMS ARE MOST POPULAR.



Technical Information



⚠ WARNING

**Product rupture can cause serious injury.
Do not connect regulator to bottled gas.
Do not exceed maximum primary pressure rating.**

⚠ CAUTION:

REGULATOR PRESSURE ADJUSTMENT – The working range of knob adjustment is designed to permit outlet pressures within their full range. Pressure adjustment beyond this range is also possible because the knob is not a limiting device. This is a common characteristic of most industrial regulators, and limiting devices may be obtained only by special design. For best performance, regulated pressure should always be set by increasing the pressure up to the desired setting.

QIX R20 & R21 Kits & Accessories

- Combination Connector** IK20CC
(Connects 2 QIX units together)
 - Combination Porting Block** IK20CP
(same as IK20CC, except with 1/8" top branch outlet)
 - Mounting brackets (pair)** MK20-0100
(Mounts directly to port inserts)
 - Wall Mounting Bracket** SAR20A57
(Uses panel mount threads - includes plastic panel mount nut)
 - Panel Mount Nut –**
 - Plastic..... R10X51-P
 - Aluminum..... R10X51-A
 - Port Insert Kits (includes o-rings & pins) NPT –**
 - 1/4" Port Size..... IK20Y
 - 3/8" Port Size..... IK20X
 - 1/2" Port Size..... IK20A
 - 3/4" Port Size..... IK20B
 - 1" Port Size..... IK20C
 - Repair Kit - Internal Parts (Piston, Innervalue, Seals)**
 - Relieving..... RKR20A
 - Non-Relieving (K) RKR20KA
 - Spring Cage Kit –**
 - R20..... CKR20A
 - R21..... CKR21Y
 - Shut-off Valve w/lockout (for inlet)** IK20V
- Specifications**
- Gauge Ports** (2) 1/4"
 - Maximum Pressure** 300 PSIG

- Port Threads / Inserts –**
- 00 No Port Inserts
 - 02 1/4"
 - 03 3/8"
 - 04 1/2"
 - 06 3/4"
 - 08 1"

- Reduced Pressure Range –**
- "B" 0-60 PSIG
 - "C" 0-120 PSIG
 - "D" 0-250 PSIG

Temperature Range 40°F to 150°F

Weight 2.6 lb
(For total weight add .1 lb for port inserts)

Materials of Construction

- Adjusting Knob** (R/B 20) Acetal
- Adjusting Screw (all)** Steel
- Body** Zinc
- Bottom Plug** Brass
- Innervalue** Brass
- Piston** Nylon
- Seals** Buna-N
- Spring Cage** Zinc
- Springs** Steel
- Thread Inserts** Zinc

