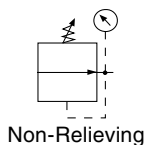
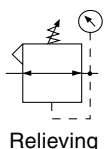


## R34 Regulators – Miniature



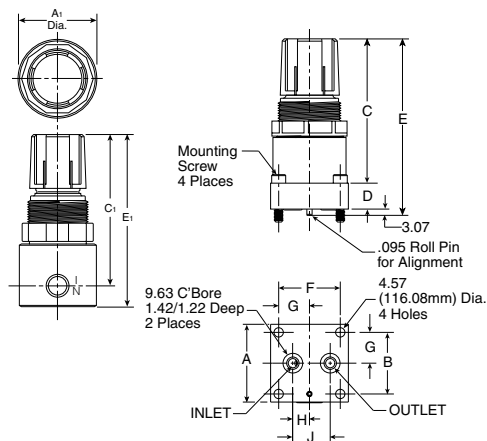
**R344-02C**



**R342-0MC**

### Features

- Diaphragm operated for fast operation
- Large Diaphragm to valve area ratio for precise regulation and high flow capacity
- Balanced valve design for precise regulation
- Available in 2 or 4 port design
- Available with a manifold mount to minimize plumbing
- Suitable for low temperature applications
- Non-rising adjusting knob
- 1/8" - 17 SCFM\*
- 1/4" - 19 SCFM\*



R34 Miniature Regulator Dimensions				
A	A <sub>1</sub>	B	B <sub>1</sub>	C
1.50 (38.1)	1.54 (39.2)	1.20 (30.5)	1.56 (39.6)	2.75 (69.9)
C <sub>1</sub>	D	E	E <sub>1</sub>	F
2.70 (68.6)	.50 (12.7)	3.25 (82.6)	3.25 (82.6)	1.20 (30.5)
G	H	J		
.60 (15.2)	.32 (8.1)	.73 (18.5)		

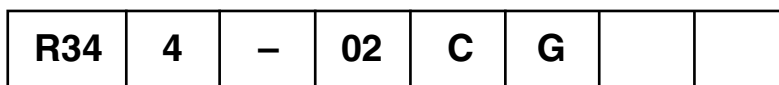
Model Type	Port Size	Without Gauge	Without Gauge	Without Gauge	With Gauge	With Gauge	With Gauge
		0 to 30 psig (0.0 to 2.1 bar)	0 to 60 psig (0.0 to 4.1 bar)	0 to 125 psig (0.0 to 8.6 bar)	0 to 30 psig (0.0 to 2.1 bar)	0 to 60 psig (0.0 to 4.1 bar)	0 to 125 psig (0.0 to 8.6 bar)
Relieving	1/8"	R344-01A	R344-01B	R344-01C	R344-01AG	R344-01BG	R344-01CG
	1/4"	R344-02A	R344-02B	<b>R344-02C</b>	R344-02AG	R344-02BG	<b>R344-02CG</b>
	Manifold Mount	R342-0MA	R342-0MB	<b>R342-0MC</b>	—	—	—

Standard part numbers shown bold.

For other models refer to ordering information below.

\* SCFM = Standard cubic feet per minute at 100 psig inlet, 90 psig no flow secondary setting and 10 psig pressure drop.

### Ordering Information



Number of Ports	Thread	Port	Pressure Range	Options	Options	Preset / Pressure Limited
2 2 Ports 4* 4 Ports	- NPT G BSPP	01 1/8" 02 1/4" 0M Manifold Mount	A 0-30 PSI B 0-60 PSI C <b>0-125 PSI</b>	Blank No Options G <b>Gauge</b> K Non-Relieving Diaphragm P Panel Mount Nut	Blank No Options L† Preset Non-Adjustable M† Preset Adjustable	Blank None XXX* Preset Pressure XXX* Pressure Limited

\* Not Available with Manifold Mount.

† Inlet Pressure is 100 psig. For other pressures, contact factory.

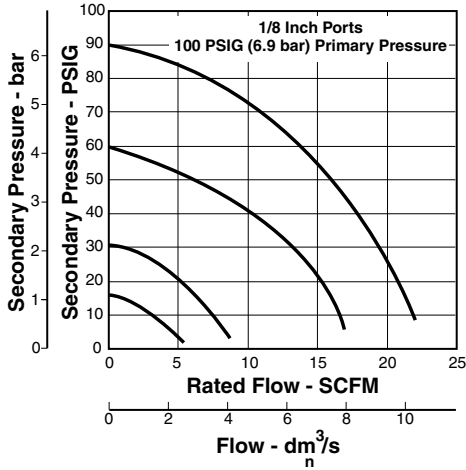
\* Available Preset / Pressure Limited Range, 10 to 90 psig in 5 psig increments. For higher pressures, contact factory.  
 (Example: 065 = 65 psig)

**BOLD ITEMS ARE MOST POPULAR.**

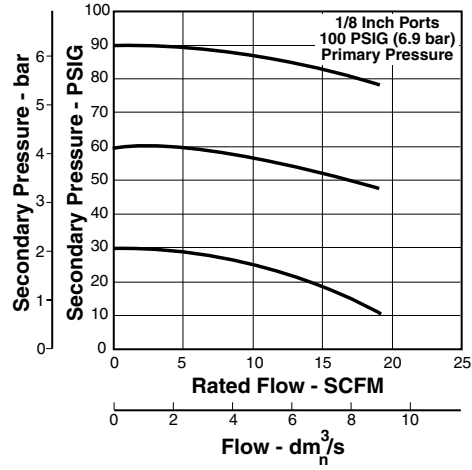


**Technical Information**

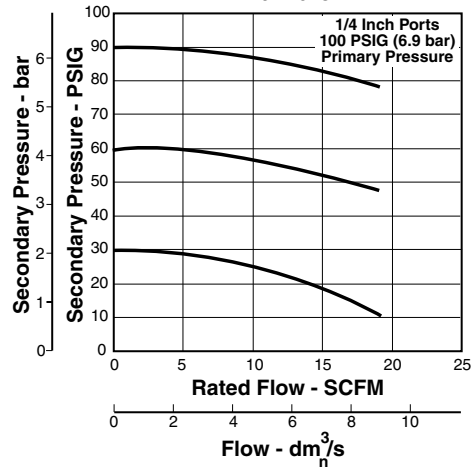
**Relief And Flow Characteristics  
R342-0MC**



**Relief And Flow Characteristics  
R344-01C**



**Relief And Flow Characteristics  
R344-02C**



**CAUTION:**  
**REGULATOR PRESSURE ADJUSTMENT** – The working range of knob adjustment is designed to permit outlet pressures within their full range. Pressure adjustment beyond this range is also possible because the knob is not a limiting device. This is a common characteristic of most industrial regulators, and limiting devices may be obtained only by special design. For best performance, regulated pressure should always be set by increasing the pressure up to the desired setting.

**WARNING**  
**Product rupture can cause serious injury.  
 Do not connect regulator to bottled gas.  
 Do not exceed maximum primary pressure rating.**

**R34 Regulator Kits and Accessories**

- Diaphragm Assembly – Non-relieving ..... GRP-96-726
- Relieving ..... GRP-96-725
- Spring, Regulating – 0 to 30 psig (0 to 2.1 bar) ..... GRP-95-111
- 0 to 60 psig (0 to 4.1 bar) ..... GRP-96-718
- 0 to 125 psig (0 to 8.6 bar) ..... GRP-96-717
- Panel Mount Nut – Aluminum ..... R05x51-A
- Plastic ..... R05x51-P
- Mounting Bracket Kit – (Includes Panel Mount Nut) ..... SA161x57
- Gauges – 0 to 60 psig (0 to 4.1 bar),  
 1-1/2" Dial Face, 1/8 NPT, CBM ..... K4515N18060
- 0 to 160 psig (0 to 11.0 bar),  
 1-1/2" Dial Face, 1/8 NPT, CBM ..... K4515N18160

**Materials of Construction**

- Body ..... Aluminum
- Bonnet ..... Acetal
- Diaphragm & Seals ..... Nitrile
- Valve Assembly ..... Brass
- Springs ..... Steel
- Panel Nut ..... Acetal

**Specifications**

- Operating Temperature ..... -40° F to 150°F (-40° C to 65.5°C)
- Supply Pressure ..... 300 psig Maximum (20.4 bar)
- Port Threads ..... 1/8, 1/4 Inch
- Gauge Ports ..... (2) Std 1/8 Inch  
 (No Gauge Port Version Available)
- Weight ..... .25 lbs. (0.11 kg)

