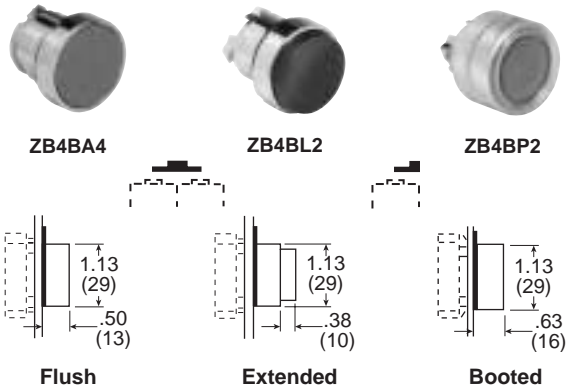


**For Use With PXBB Valve Bodies and ZBE Electrical Switch Bodies**

**Push Buttons**

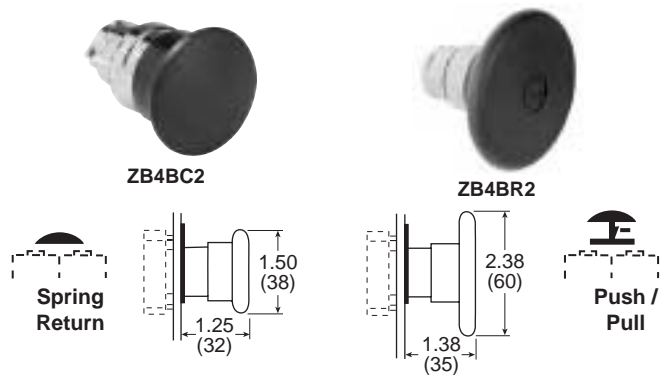


Plastic Head ZB5**	Metal Head ZB4*	Color	Function	Description
ZB5AA2	<b>ZB4BA2</b>	Black	Spring Return	Flush
ZB5AA3	<b>ZB4BA3</b>	Green		
ZB5AA4	<b>ZB4BA4</b>	Red		
—	ZB4BA5	Yellow		
—	ZB4BA6	Blue		
ZB5AL2	<b>ZB4BL2</b>	Black	Spring Return	Extended
ZB5AL3	<b>ZB4BL3</b>	Green		
ZB5AL4	<b>ZB4BL4</b>	Red		
—	ZB4BL5	Yellow	Spring Return	Booted
—	ZB4BP2	Black		
—	ZB4BP3	Green		
—	ZB4BP4	Red		

\* ZB4\*\*\* Model Numbers are Metal Head Operators

\*\* ZB5\*\*\* Model Numbers are Plastic Head Operators

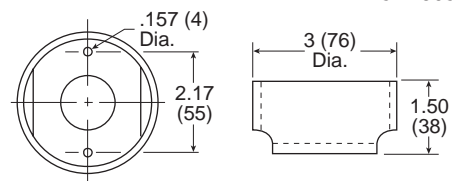
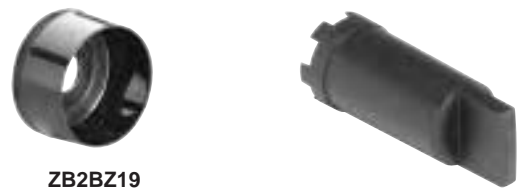
**Mushroom Head Push Buttons**



Part Number*	Color	Function	Description
<b>ZB4BC2</b>	Black	Spring Return	Ø 40mm Head
<b>ZB4BC3</b>	Green		
<b>ZB4BC4</b>	Red		
<b>ZB4BT2</b>	Black	Latching	Ø 60mm Head
<b>ZB4BT4</b>	Red	Push-Pull	
<b>ZB4BR2</b>	Black	Spring Return	Ø 60mm Head
ZB4BR3	Green		
ZB4BR4	Red		

\* ZB4\*\*\* Model Numbers are Metal Head Operators

**Mounting Accessories**



**Push / Push Buttons**



Part Number*	Color	Function	Description
ZB4BH02	Black	Detent 2-Position	Flush
ZB4BH03	Green		
ZB4BH04	Red		

\* ZB4\*\*\*\* Model Numbers are Metal Head Operators

Part Number	Color	Description
ZB2BZ19	Black Plastic	Guard for 60mm Mushroom Heads
ZB5AZ905	—	Plastic Head (ZB5) Mounting Nut Tightening Tool

**BOLD ITEMS ARE MOST POPULAR**

